

Datasheet for ABIN5535764  
**anti-WDR11 antibody (AA 544-572)**[Go to Product page](#)

## 2 Images

## Overview

Quantity:	400 µL
Target:	WDR11
Binding Specificity:	AA 544-572
Reactivity:	Human, Mouse
Host:	Rabbit
Clonality:	Polyclonal
Conjugate:	This WDR11 antibody is un-conjugated
Application:	Western Blotting (WB), Flow Cytometry (FACS)

## Product Details

Immunogen:	This BRWD2 antibody is generated from rabbits immunized with a KLH conjugated synthetic peptide between 544-572 amino acids from the Central region of human BRWD2.
Isotype:	Ig Fraction
Purification:	This antibody is purified through a protein A column, followed by peptide affinity purification.

## Target Details

Target:	WDR11
Alternative Name:	BRWD2 ( <a href="#">WDR11 Products</a> )
Background:	WDR11 is a member of the WD repeat protein family. WD repeats are minimally conserved regions of approximately 40 amino acids typically bracketed by gly-his and trp-asp (GH-WD), which may facilitate formation of heterotrimeric or multiprotein complexes. Members of this

## Target Details

family are involved in a variety of cellular processes, including cell cycle progression, signal transduction, apoptosis, and gene regulation. This gene is located in the chromosome 10q25-26 region, which is frequently deleted in gliomas and tumors of other tissues, and is disrupted by the t(10,19) translocation rearrangement in glioblastoma cells. The gene location suggests that it is a candidate gene for the tumor suppressor locus.

Molecular Weight: 137 kDa

Gene ID: 55717

UniProt: [Q9BZH6](#)

## Application Details

Application Notes: For WB starting dilution is: 1:1000

For FACS starting dilution is: 1:10~50

Restrictions: For Research Use only

## Handling

Format: Liquid

Concentration: 0.5 mg/mL

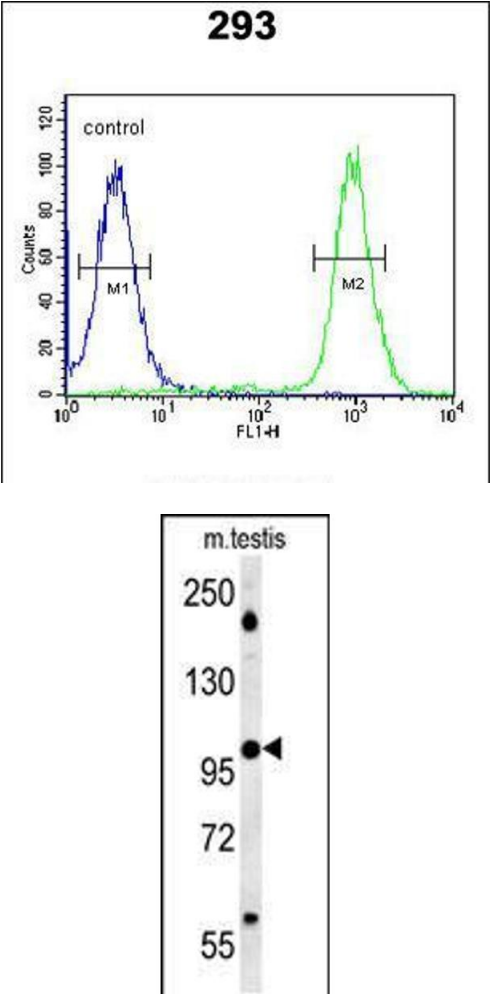
Buffer: Supplied in PBS with 0.09 % (W/V) sodium azide.

Preservative: Sodium azide

Precaution of Use: This product contains Sodium azide: a POISONOUS AND HAZARDOUS SUBSTANCE which should be handled by trained staff only.

Storage: 4 °C, -20 °C

Storage Comment: Store at 4°C for three months and -20°C, stable for up to one year. As with all antibodies care should be taken to avoid repeated freeze thaw cycles. Antibodies should not be exposed to prolonged high temperatures.



**Flow Cytometry**

**Image 1.** Flow cytometric analysis of 293 cells (right histogram) compared to a negative control cell (left histogram).FITC-conjugated goat-anti-rabbit secondary antibodies were used for the analysis.

**Western Blotting**

**Image 2.** Western blot analysis in mouse testis tissue lysates (15ug/lane).This demonstrates the detected BRWD2 protein (arrow).