

Datasheet for ABIN5535818  
**anti-PRSS16 antibody (N-Term)**[Go to Product page](#)

## 2 Images

## Overview

Quantity:	400 µL
Target:	PRSS16
Binding Specificity:	AA 52-81, N-Term
Reactivity:	Human, Mouse
Host:	Rabbit
Clonality:	Polyclonal
Conjugate:	This PRSS16 antibody is un-conjugated
Application:	Western Blotting (WB)

## Product Details

Immunogen:	This PRSS16 antibody is generated from rabbits immunized with a KLH conjugated synthetic peptide between 52-81 amino acids from the N-terminal region of human PRSS16.
Isotype:	Ig Fraction
Purification:	This antibody is purified through a protein A column, followed by peptide affinity purification.

## Target Details

Target:	PRSS16
Alternative Name:	PRSS16 ( <a href="#">PRSS16 Products</a> )
Background:	This gene encodes a serine protease expressed exclusively in the thymus. It is thought to play a role in the alternative antigen presenting pathway used by cortical thymic epithelial cells during the positive selection of T cells. The gene is found in the large histone gene cluster on



## Target Details

chromosome 6, near the major histocompatibility complex (MHC) class I region. A second transcript variant has been described, but its full length nature has not been determined.

Molecular Weight: 55 kDa

Gene ID: 10279

UniProt: [Q9NQE7](#)

## Application Details

Application Notes: For WB starting dilution is: 1:1000

Restrictions: For Research Use only

## Handling

Format: Liquid

Concentration: 0.5 mg/mL

Buffer: Supplied in PBS with 0.09 % (W/V) sodium azide.

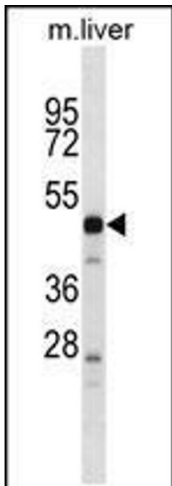
Preservative: Sodium azide

Precaution of Use: This product contains Sodium azide: a POISONOUS AND HAZARDOUS SUBSTANCE which should be handled by trained staff only.

Storage: 4 °C, -20 °C

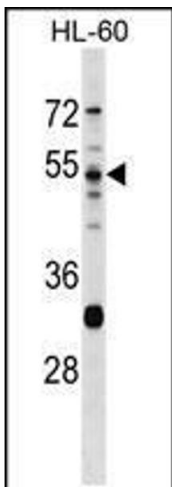
Storage Comment: Store at 4°C for three months and -20°C, stable for up to one year. As with all antibodies care should be taken to avoid repeated freeze thaw cycles. Antibodies should not be exposed to prolonged high temperatures.





Western Blotting

**Image 1.** Western blot analysis in mouse liver tissue lysates (35ug/lane).



Western Blotting

**Image 2.** Western blot analysis in HL-60 cell line lysates (35ug/lane).