

Datasheet for ABIN5535825  
**anti-ARHGAP36 antibody (C-Term)**[Go to Product page](#)

## 1 Image

## Overview

Quantity:	400 µL
Target:	ARHGAP36
Binding Specificity:	AA 373-402, C-Term
Reactivity:	Human
Host:	Rabbit
Clonality:	Polyclonal
Conjugate:	This ARHGAP36 antibody is un-conjugated
Application:	Western Blotting (WB)

## Product Details

Immunogen:	This RP13-102H20.1/ARHGAP36 antibody is generated from rabbits immunized with a KLH conjugated synthetic peptide between 373-402 amino acids from the C-terminal region of human RP13-102H20.1/ARHGAP36.
Isotype:	Ig Fraction
Purification:	This antibody is purified through a protein A column, followed by peptide affinity purification.

## Target Details

Target:	ARHGAP36
Alternative Name:	RP13-102H20.1/ARHGAP36 ( <a href="#">ARHGAP36 Products</a> )
Background:	GTPase activator for the Rho-type GTPases by converting them to an inactive GDP-bound state (By similarity).

## Target Details

Molecular Weight:	62 kDa
Gene ID:	158763
UniProt:	<a href="#">Q6ZRI8</a>

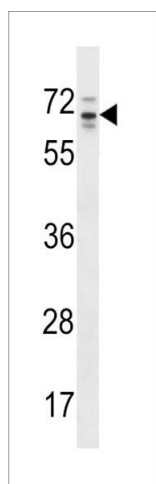
## Application Details

Application Notes:	For WB starting dilution is: 1:1000
Restrictions:	For Research Use only

## Handling

Format:	Liquid
Concentration:	0.5 mg/mL
Buffer:	Supplied in PBS with 0.09 % (W/V) sodium azide.
Preservative:	Sodium azide
Precaution of Use:	This product contains Sodium azide: a POISONOUS AND HAZARDOUS SUBSTANCE which should be handled by trained staff only.
Storage:	4 °C, -20 °C
Storage Comment:	Store at 4°C for three months and -20°C, stable for up to one year. As with all antibodies care should be taken to avoid repeated freeze thaw cycles. Antibodies should not be exposed to prolonged high temperatures.

## Images



### Western Blotting

**Image 1.** Western blot analysis in HepG2 cell line lysates (35ug/lane). This demonstrates the RP13-102H20.1 antibody detected the RP13-102H20.1 protein (arrow).