

Datasheet for ABIN5535862  
**anti-BEND4 antibody (N-Term)**

2 Images



[Go to Product page](#)

## Overview

Quantity:	400 µL
Target:	BEND4
Binding Specificity:	AA 16-44, N-Term
Reactivity:	Human
Host:	Rabbit
Clonality:	Polyclonal
Conjugate:	This BEND4 antibody is un-conjugated
Application:	Western Blotting (WB), Flow Cytometry (FACS)

## Product Details

Immunogen:	This BEND4 antibody is generated from rabbits immunized with a KLH conjugated synthetic peptide between 16-44 amino acids from the N-terminal region of human BEND4.
Isotype:	Ig Fraction
Purification:	This antibody is purified through a protein A column, followed by peptide affinity purification.

## Target Details

Target:	BEND4
Alternative Name:	BEND4 ( <a href="#">BEND4 Products</a> )
Molecular Weight:	58 kDa
Gene ID:	389206

## Target Details

UniProt: [Q6ZU67](#)

## Application Details

Application Notes: For WB starting dilution is: 1:1000

For FACS starting dilution is: 1:10~50

Restrictions: For Research Use only

## Handling

Format: Liquid

Concentration: 0.5 mg/mL

Buffer: Supplied in PBS with 0.09 % (W/V) sodium azide.

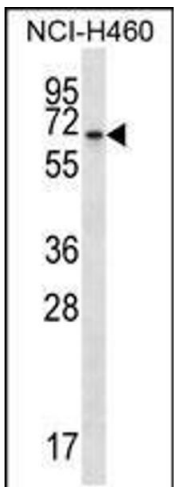
Preservative: Sodium azide

Precaution of Use: This product contains Sodium azide: a POISONOUS AND HAZARDOUS SUBSTANCE which should be handled by trained staff only.

Storage: 4 °C, -20 °C

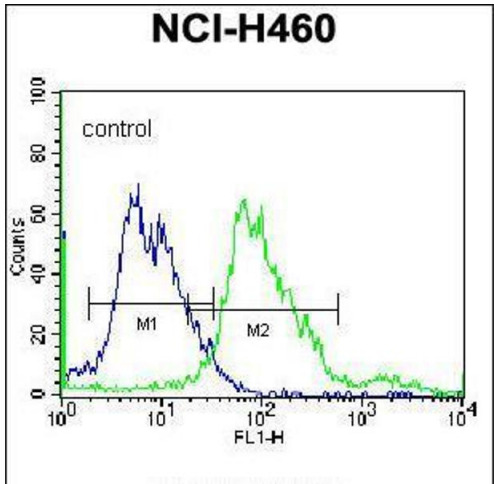
Storage Comment: Store at 4°C for three months and -20°C, stable for up to one year. As with all antibodies care should be taken to avoid repeated freeze thaw cycles. Antibodies should not be exposed to prolonged high temperatures.

## Images



### Western Blotting

**Image 1.** Western blot analysis in NCI-H460 cell line lysates (35ug/lane).



**Flow Cytometry**

**Image 2.** Flow cytometric analysis of NCI-H460 cells (right histogram) compared to a negative control cell (left histogram).FITC-conjugated donkey-anti-rabbit secondary antibodies were used for the analysis.