

Datasheet for ABIN5535878  
**anti-MICU1 antibody (C-Term)**

## 3 Images

[Go to Product page](#)

## Overview

Quantity:	400 µL
Target:	MICU1
Binding Specificity:	AA 445-474, C-Term
Reactivity:	Human
Host:	Rabbit
Clonality:	Polyclonal
Conjugate:	This MICU1 antibody is un-conjugated
Application:	Western Blotting (WB), Immunofluorescence (IF), Flow Cytometry (FACS)

## Product Details

Immunogen:	This CALCR antibody is generated from rabbits immunized with a KLH conjugated synthetic peptide between 445-474 amino acids from the C-terminal region of human CALCR.
Isotype:	Ig Fraction
Purification:	This antibody is purified through a protein A column, followed by peptide affinity purification.

## Target Details

Target:	MICU1
Alternative Name:	CALC ( <a href="#">MICU1 Products</a> )
Background:	CALCR is a high affinity receptor for the peptide hormone calcitonin and belongs to a subfamily of seven transmembrane-spanning G protein-coupled receptors. The encoded protein is involved in maintaining calcium homeostasis and in regulating osteoclast-mediated bone

## Target Details

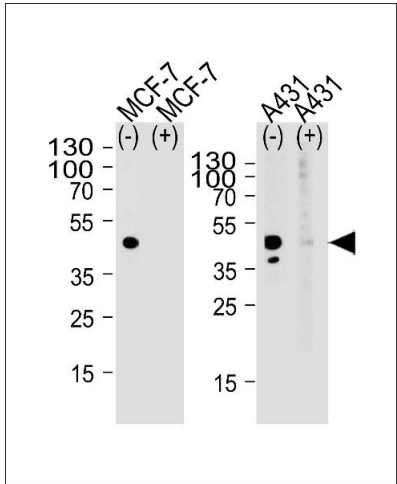
	resorption. Polymorphisms in this gene have been associated with variations in bone mineral density and onset of osteoporosis.
Molecular Weight:	59 kDa
Gene ID:	799
UniProt:	<a href="#">P30988</a>

## Application Details

Application Notes:	For WB starting dilution is: 1:1000
	For FACS starting dilution is: 1:10~50
	For IF starting dilution is: 1:10~50
Restrictions:	For Research Use only

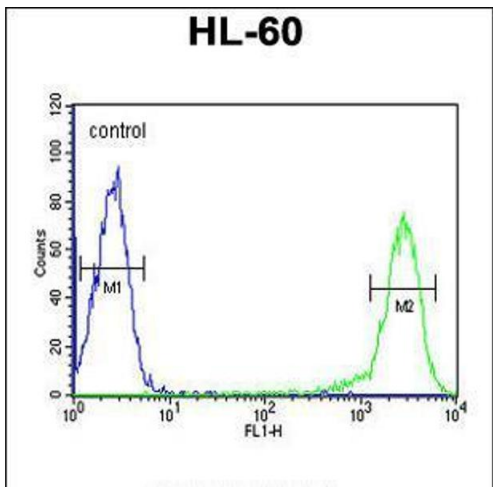
## Handling

Format:	Liquid
Concentration:	0.5 mg/mL
Buffer:	Supplied in PBS with 0.09 % (W/V) sodium azide.
Preservative:	Sodium azide
Precaution of Use:	This product contains Sodium azide: a POISONOUS AND HAZARDOUS SUBSTANCE which should be handled by trained staff only.
Storage:	4 °C, -20 °C
Storage Comment:	Store at 4°C for three months and -20°C, stable for up to one year. As with all antibodies care should be taken to avoid repeated freeze thaw cycles. Antibodies should not be exposed to prolonged high temperatures.



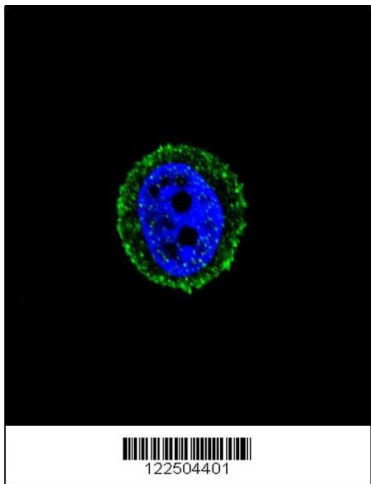
### Western Blotting

**Image 1.** Western blot analysis of lysate from MCF-7, A431 cell line, using CALCR Antibody with(+) or without(-) peptides at 1:1000 at each lane. A goat anti-rabbit(HRP) at 1:5000 dilution was used as the secondary antibody. Lysate at 35ug per lane.



### Flow Cytometry

**Image 2.** Flow cytometric analysis of HL-60 cells (right histogram) compared to a negative control cell (left histogram). FITC-conjugated goat-anti-rabbit secondary antibodies were used for the analysis.



### Immunofluorescence

**Image 3.** Confocal immunofluorescent analysis of CALCR Antibody with MCF-7 cell followed by Alexa Fluor 488-conjugated goat anti-rabbit IgG (green). DAPI was used to stain the cell nuclear (blue).