



Datasheet for ABIN5535897
anti-ARIH2 antibody (C-Term)



[Go to Product page](#)

2 Images

Overview

| | |
|----------------------|--|
| Quantity: | 400 µL |
| Target: | ARIH2 |
| Binding Specificity: | AA 445-474, C-Term |
| Reactivity: | Human |
| Host: | Rabbit |
| Clonality: | Polyclonal |
| Conjugate: | This ARIH2 antibody is un-conjugated |
| Application: | Western Blotting (WB), Immunohistochemistry (Paraffin-embedded Sections) (IHC (p)) |

Product Details

| | |
|---------------|--|
| Immunogen: | This ARIH2 antibody is generated from rabbits immunized with a KLH conjugated synthetic peptide between 445-474 amino acids from the C-terminal region of human ARIH2. |
| Isotype: | Ig Fraction |
| Purification: | This antibody is purified through a protein A column, followed by peptide affinity purification. |

Target Details

| | |
|-------------------|---|
| Target: | ARIH2 |
| Alternative Name: | ARIH2 (ARIH2 Products) |
| Background: | E3 ubiquitin-protein ligase mediating 'Lys-48'-and 'Lys-63'-linked polyubiquitination and subsequent proteasomal degradation of modified proteins. May play a role in myelopoiesis. |

Target Details

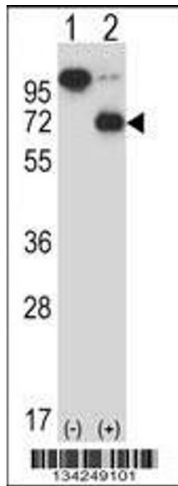
| | |
|-------------------|------------------------|
| Molecular Weight: | 58 kDa |
| Gene ID: | 10425 |
| UniProt: | O95376 |

Application Details

| | |
|--------------------|--|
| Application Notes: | For WB starting dilution is: 1:1000 For IHC-P starting dilution is: 1:10~50 |
| Restrictions: | For Research Use only |

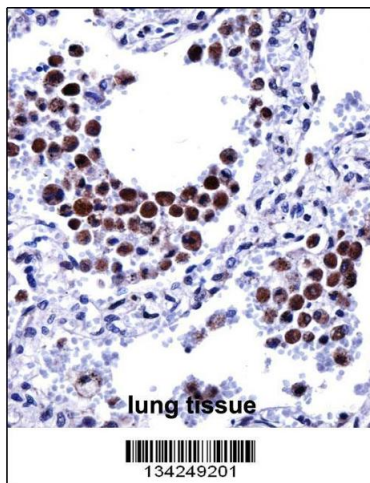
Handling

| | |
|--------------------|--|
| Format: | Liquid |
| Concentration: | 0.5 mg/mL |
| Buffer: | Supplied in PBS with 0.09 % (W/V) sodium azide. |
| Preservative: | Sodium azide |
| Precaution of Use: | This product contains Sodium azide: a POISONOUS AND HAZARDOUS SUBSTANCE which should be handled by trained staff only. |
| Storage: | 4 °C,-20 °C |
| Storage Comment: | Store at 4°C for three months and -20°C, stable for up to one year. As with all antibodies care should be taken to avoid repeated freeze thaw cycles. Antibodies should not be exposed to prolonged high temperatures. |



Western Blotting

Image 1. Western blot analysis of ARIH2 using rabbit polyclonal ARIH2 Antibody using 293 cell lysates (2 ug/lane) either nontransfected (Lane 1) or transiently transfected (Lane 2) with the ARIH2 gene.



Immunohistochemistry

Image 2. ARIH2 Antibody immunohistochemistry analysis in formalin fixed and paraffin embedded human lung tissue followed by peroxidase conjugation of the secondary antibody and DAB staining.