

Datasheet for ABIN5535913
anti-EME2 antibody (C-Term)[Go to Product page](#)

1 Image

Overview

Quantity:	400 µL
Target:	EME2
Binding Specificity:	AA 249-278, C-Term
Reactivity:	Human
Host:	Rabbit
Clonality:	Polyclonal
Conjugate:	This EME2 antibody is un-conjugated
Application:	Western Blotting (WB)

Product Details

Immunogen:	This EME2 antibody is generated from rabbits immunized with a KLH conjugated synthetic peptide between 249-278 amino acids from the C-terminal region of human EME2.
Isotype:	Ig Fraction
Purification:	This antibody is purified through a protein A column, followed by peptide affinity purification.

Target Details

Target:	EME2
Alternative Name:	EME2 (EME2 Products)
Background:	EME2 forms a heterodimer with MUS81 (MIM 606591) that functions as an XPF (MIM 278760)-type flap/fork endonuclease in DNA repair (Ciccia et al., 2007 [PubMed 17289582]).

Target Details

Molecular Weight:	41 kDa
Gene ID:	197342
UniProt:	A4GXA9

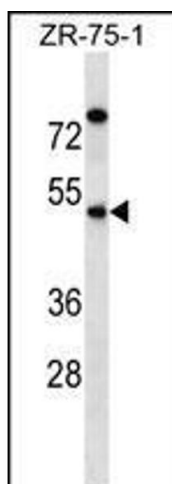
Application Details

Application Notes:	For WB starting dilution is: 1:1000
Restrictions:	For Research Use only

Handling

Format:	Liquid
Concentration:	0.5 mg/mL
Buffer:	Supplied in PBS with 0.09 % (W/V) sodium azide.
Preservative:	Sodium azide
Precaution of Use:	This product contains Sodium azide: a POISONOUS AND HAZARDOUS SUBSTANCE which should be handled by trained staff only.
Storage:	4 °C, -20 °C
Storage Comment:	Store at 4°C for three months and -20°C, stable for up to one year. As with all antibodies care should be taken to avoid repeated freeze thaw cycles. Antibodies should not be exposed to prolonged high temperatures.

Images



Western Blotting

Image 1. Western blot analysis in ZR-75-1 cell line lysates (35ug/lane).