

Datasheet for ABIN5535933  
**anti-CLEC12B antibody (C-Term)**

## 3 Images

[Go to Product page](#)

## Overview

Quantity:	400 µL
Target:	CLEC12B
Binding Specificity:	AA 249-276, C-Term
Reactivity:	Human, Mouse
Host:	Rabbit
Clonality:	Polyclonal
Conjugate:	This CLEC12B antibody is un-conjugated
Application:	Western Blotting (WB), Immunohistochemistry (Paraffin-embedded Sections) (IHC (p))

## Product Details

Immunogen:	This CLEC12B antibody is generated from rabbits immunized with a KLH conjugated synthetic peptide between 249-276 amino acids from the C-terminal region of human CLEC12B.
Isotype:	Ig Fraction
Purification:	This antibody is purified through a protein A column, followed by peptide affinity purification.

## Target Details

Target:	CLEC12B
Alternative Name:	CLEC12B ( <a href="#">CLEC12B Products</a> )
Background:	Cell surface receptor that protects target cells against natural killer cell-mediated lysis. Modulates signaling cascades and mediates tyrosine phosphorylation of target MAP kinases.

## Target Details

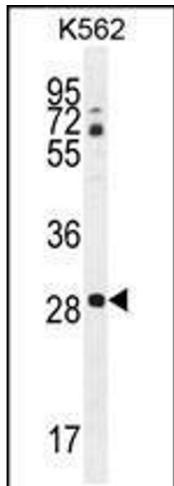
Molecular Weight:	32 kDa
Gene ID:	387837
UniProt:	<a href="#">Q2HXU8</a>

## Application Details

Application Notes:	For WB starting dilution is: 1:1000  For IHC-P starting dilution is: 1:50~100
Restrictions:	For Research Use only

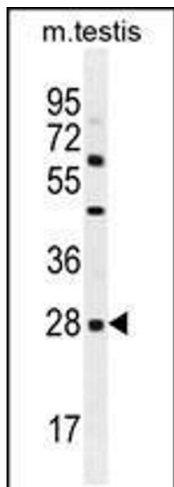
## Handling

Format:	Liquid
Concentration:	0.34 mg/mL
Buffer:	Supplied in PBS with 0.09 % (W/V) sodium azide.
Preservative:	Sodium azide
Precaution of Use:	This product contains Sodium azide: a POISONOUS AND HAZARDOUS SUBSTANCE which should be handled by trained staff only.
Storage:	4 °C,-20 °C
Storage Comment:	Store at 4°C for three months and -20°C, stable for up to one year. As with all antibodies care should be taken to avoid repeated freeze thaw cycles. Antibodies should not be exposed to prolonged high temperatures.



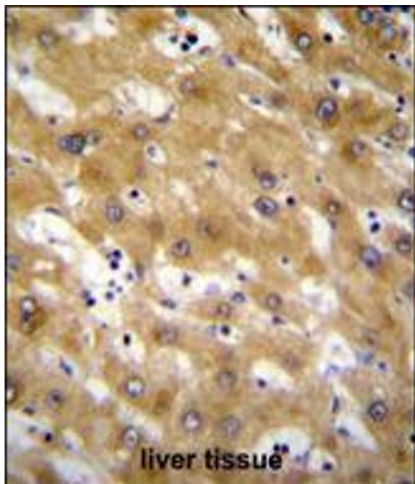
#### Western Blotting

**Image 1.** Western blot analysis in K562 cell line lysates (35ug/lane).



#### Western Blotting

**Image 2.** Western blot analysis in mouse testis tissue lysates (35ug/lane).



#### Immunohistochemistry

**Image 3.** CLEC12B Antibody immunohistochemistry analysis in formalin fixed and paraffin embedded human liver tissue followed by peroxidase conjugation of the secondary antibody and DAB staining.