

Datasheet for ABIN5535976  
**anti-FCRL5 antibody (AA 302-331)**[Go to Product page](#)

## 1 Image

## Overview

Quantity:	400 µL
Target:	FCRL5
Binding Specificity:	AA 302-331
Reactivity:	Human
Host:	Rabbit
Clonality:	Polyclonal
Conjugate:	This FCRL5 antibody is un-conjugated
Application:	Western Blotting (WB)

## Product Details

Immunogen:	This FCRL5 antibody is generated from rabbits immunized with a KLH conjugated synthetic peptide between 302-331 amino acids from the Central region of human FCRL5.
Isotype:	Ig Fraction
Purification:	This antibody is purified through a protein A column, followed by peptide affinity purification.

## Target Details

Target:	FCRL5
Alternative Name:	FCRL5 ( <a href="#">FCRL5 Products</a> )
Background:	FCRL5 is a member of the immunoglobulin receptor superfamily and the Fc-receptor like family. This gene and several other Fc receptor-like gene members are clustered on the long arm of chromosome 1. The encoded protein is a single-pass type I membrane protein and

## Target Details

contains 8 immunoglobulin-like C2-type domains. This gene is implicated in B cell development and lymphomagenesis. Alternatively spliced transcript variants encoding different isoforms have been identified.

Molecular Weight: 106 kDa

Gene ID: 83416

UniProt: [Q96RD9](#)

## Application Details

Application Notes: For WB starting dilution is: 1:1000

Restrictions: For Research Use only

## Handling

Format: Liquid

Concentration: 0.5 mg/mL

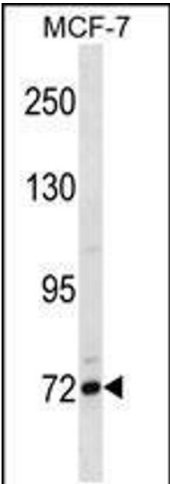
Buffer: Supplied in PBS with 0.09 % (W/V) sodium azide.

Preservative: Sodium azide

Precaution of Use: This product contains Sodium azide: a POISONOUS AND HAZARDOUS SUBSTANCE which should be handled by trained staff only.

Storage: 4 °C, -20 °C

Storage Comment: Store at 4°C for three months and -20°C, stable for up to one year. As with all antibodies care should be taken to avoid repeated freeze thaw cycles. Antibodies should not be exposed to prolonged high temperatures.



Western Blotting

**Image 1.** Western blot analysis in MCF-7 cell line lysates (35ug/lane).