

Datasheet for ABIN5536011
anti-KLF6 antibody (C-Term)



[Go to Product page](#)

3 Images

Overview

Quantity:	400 µL
Target:	KLF6
Binding Specificity:	AA 159-186, C-Term
Reactivity:	Human, Mouse
Host:	Rabbit
Clonality:	Polyclonal
Conjugate:	This KLF6 antibody is un-conjugated
Application:	Western Blotting (WB), Flow Cytometry (FACS), Immunofluorescence (IF), Immunohistochemistry (Paraffin-embedded Sections) (IHC (p))

Product Details

Immunogen:	This KLF6 antibody is generated from rabbits immunized with a KLH conjugated synthetic peptide between 159-186 amino acids from the C-terminal region of human KLF6.
Isotype:	Ig Fraction
Purification:	This antibody is prepared by Saturated Ammonium Sulfate (SAS) precipitation followed by dialysis

Target Details

Target:	KLF6
Alternative Name:	KLF6 (KLF6 Products)
Background:	COPEB is a member of the Kruppel-like family of transcription factors. The zinc finger protein is

Target Details

	a transcriptional activator, and functions as a tumor suppressor.
Molecular Weight:	32 kDa
Gene ID:	1316
UniProt:	Q99612

Application Details

Application Notes:	For WB starting dilution is: 1:1000
	For IHC-P starting dilution is: 1:10~50
	For FACS starting dilution is: 1:10~50
	For IF starting dilution is: 1:10~50
Restrictions:	For Research Use only

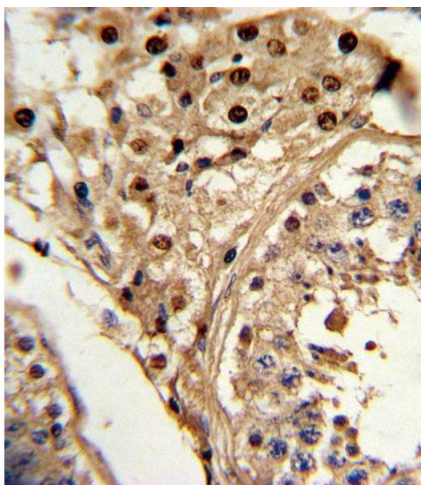
Handling

Format:	Liquid
Concentration:	1.5 mg/mL
Buffer:	Supplied in PBS with 0.09 % (W/V) sodium azide.
Preservative:	Sodium azide
Precaution of Use:	This product contains Sodium azide: a POISONOUS AND HAZARDOUS SUBSTANCE which should be handled by trained staff only.
Storage:	4 °C,-20 °C
Storage Comment:	Store at 4°C for three months and -20°C, stable for up to one year. As with all antibodies care should be taken to avoid repeated freeze thaw cycles. Antibodies should not be exposed to prolonged high temperatures.



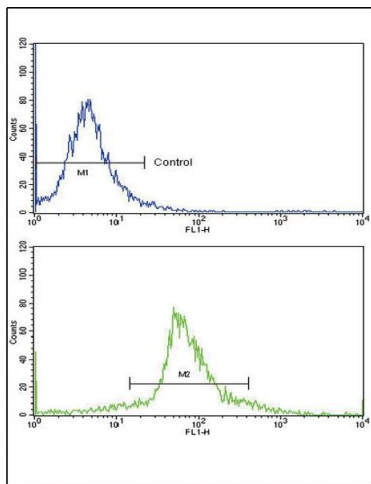
Western Blotting

Image 1. Western blot analysis of KLF6 Antibody in mouse stomach tissue lysates (35ug/lane)



Immunohistochemistry

Image 2. Formalin-fixed and paraffin-embedded human testis tissue reacted with KLF6 Antibody , which was peroxidase-conjugated to the secondary antibody, followed by DAB staining.



Flow Cytometry

Image 3. Flow cytometric analysis of widr cells using KLF6 Antibody (bottom histogram) compared to a negative control cell (top histogram)FITC-conjugated goat-anti-rabbit secondary antibodies were used for the analysis.