

Datasheet for ABIN5536022
anti-XPO1 antibody (C-Term)

3 Images

[Go to Product page](#)

Overview

Quantity:	400 µL
Target:	XPO1
Binding Specificity:	AA 817-846, C-Term
Reactivity:	Human, Mouse
Host:	Rabbit
Clonality:	Polyclonal
Conjugate:	This XPO1 antibody is un-conjugated
Application:	Western Blotting (WB), Immunohistochemistry (Paraffin-embedded Sections) (IHC (p)), Flow Cytometry (FACS)

Product Details

Immunogen:	This XPO1 antibody is generated from rabbits immunized with a KLH conjugated synthetic peptide between 817-846 amino acids from the C-terminal region of human XPO1.
Isotype:	Ig Fraction
Purification:	This antibody is prepared by Saturated Ammonium Sulfate (SAS) precipitation followed by dialysis

Target Details

Target:	XPO1
Alternative Name:	XPO1 (XPO1 Products)
Background:	XPO1 mediates leucine-rich nuclear export signal (NES)-dependent protein transport. Exportin 1

Target Details

specifically inhibits the nuclear export of Rev and U snRNAs. It is involved in the control of several cellular processes by controlling the localization of cyclin B, MPAK, and MAPKAP kinase 2. This protein also regulates NFAT and AP-1.

Molecular Weight: 123 kDa

Gene ID: 7514

UniProt: [O14980](#)

Pathways: [M Phase](#)

Application Details

Application Notes: For WB starting dilution is: 1:1000

For IHC-P starting dilution is: 1:50~100

For FACS starting dilution is: 1:10~50

Restrictions: For Research Use only

Handling

Format: Liquid

Concentration: 2 mg/mL

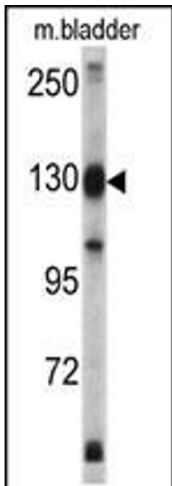
Buffer: Supplied in PBS with 0.09 % (W/V) sodium azide.

Preservative: Sodium azide

Precaution of Use: This product contains Sodium azide: a POISONOUS AND HAZARDOUS SUBSTANCE which should be handled by trained staff only.

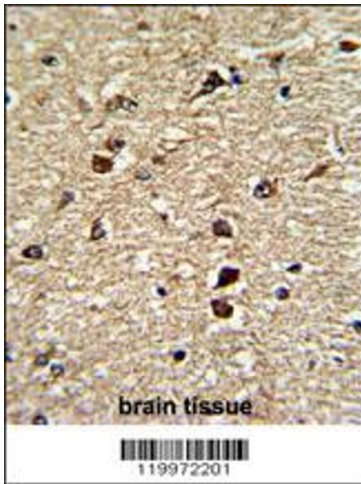
Storage: 4 °C,-20 °C

Storage Comment: Store at 4°C for three months and -20°C, stable for up to one year. As with all antibodies care should be taken to avoid repeated freeze thaw cycles. Antibodies should not be exposed to prolonged high temperatures.



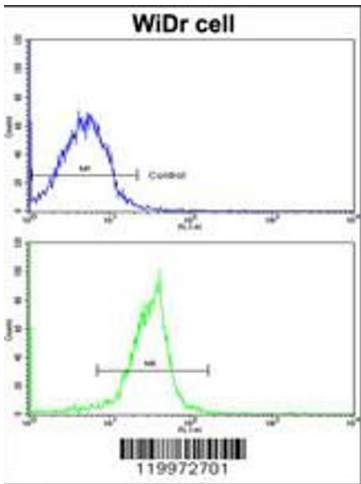
Western Blotting

Image 1. Western blot analysis of XPO1 antibody in mouse bladder tissue lysates (35ug/lane)



Immunohistochemistry

Image 2. Formalin-fixed and paraffin-embedded human brain tissue reacted with XPO1 Antibody , which was peroxidase-conjugated to the secondary antibody, followed by DAB staining.



Flow Cytometry

Image 3. Flow cytometric analysis of wiDr cells using XPO1 Antibody (bottom histogram) compared to a negative control cell (top histogram). FITC-conjugated goat-anti-rabbit secondary antibodies were used for the analysis.