

Datasheet for ABIN5536026
anti-DGKA antibody (C-Term)[Go to Product page](#)

2 Images

Overview

Quantity:	400 µL
Target:	DGKA
Binding Specificity:	AA 598-628, C-Term
Reactivity:	Human
Host:	Rabbit
Clonality:	Polyclonal
Conjugate:	This DGKA antibody is un-conjugated
Application:	Western Blotting (WB), Immunohistochemistry (Paraffin-embedded Sections) (IHC (p))

Product Details

Immunogen:	This DGKA antibody is generated from rabbits immunized with a KLH conjugated synthetic peptide between 598-628 amino acids from the C-terminal region of human DGKA.
Isotype:	Ig Fraction
Purification:	This antibody is prepared by Saturated Ammonium Sulfate (SAS) precipitation followed by dialysis

Target Details

Target:	DGKA
Alternative Name:	DGKA (DGKA Products)
Background:	Upon cell stimulation, the kinase DGKA converts the second messenger diacylglycerol into phosphatidate, initiating the resynthesis of phosphatidylinositols and attenuating protein kinase

Target Details

C activity. DGKA is stimulated by calcium and phosphatidylserine, and is phosphorylated by protein kinase C. Tissue expression is in lymphocytes and oligodendroglial cells. DGKA contains 2 zinc-dependent phorbol-ester and DAG binding domains, and 2 EF-hand calcium binding domains.

Molecular Weight: 83 kDa

Gene ID: 1606

UniProt: [P23743](#)

Application Details

Application Notes: For WB starting dilution is: 1:1000

For IHC-P starting dilution is: 1:50~100

Restrictions: For Research Use only

Handling

Format: Liquid

Concentration: 2 mg/mL

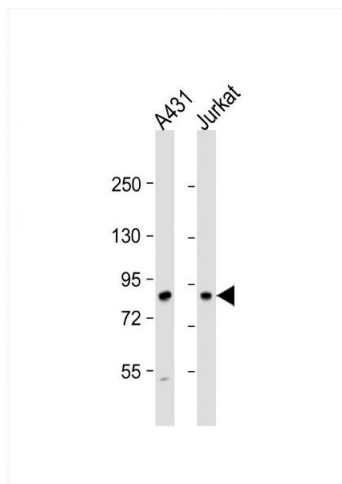
Buffer: Supplied in PBS with 0.09 % (W/V) sodium azide.

Preservative: Sodium azide

Precaution of Use: This product contains Sodium azide: a POISONOUS AND HAZARDOUS SUBSTANCE which should be handled by trained staff only.

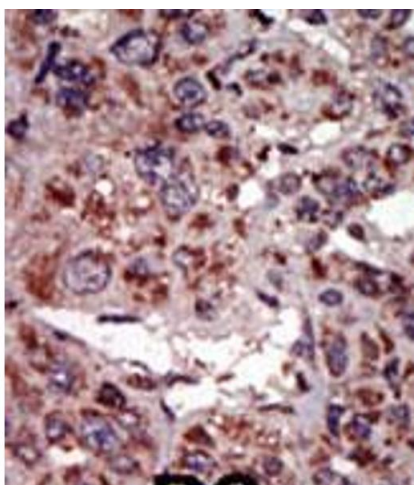
Storage: 4 °C, -20 °C

Storage Comment: Store at 4°C for three months and -20°C, stable for up to one year. As with all antibodies care should be taken to avoid repeated freeze thaw cycles. Antibodies should not be exposed to prolonged high temperatures.



Western Blotting

Image 1. Western Blot at 1:1000 dilution Lane 1: A431 whole cell lysate Lane 2: Jurkat whole cell lysate Lysates/proteins at 20 ug per lane.



Immunohistochemistry

Image 2. Formalin-fixed and paraffin-embedded human cancer tissue reacted with the primary antibody, which was peroxidase-conjugated to the secondary antibody, followed by AEC staining. BC = breast carcinoma; HC = hepatocarcinoma.