

Datasheet for ABIN5536049
anti-ELOVL4 antibody (C-Term)[Go to Product page](#)

2 Images

Overview

Quantity:	400 µL
Target:	ELOVL4
Binding Specificity:	AA 286-314, C-Term
Reactivity:	Human
Host:	Rabbit
Clonality:	Polyclonal
Conjugate:	This ELOVL4 antibody is un-conjugated
Application:	Western Blotting (WB)

Product Details

Immunogen:	This ELOVL4 antibody is generated from rabbits immunized with a KLH conjugated synthetic peptide between 286-314 amino acids from the C-terminal region of human ELOVL4.
Isotype:	Ig Fraction
Purification:	This antibody is purified through a protein A column, followed by peptide affinity purification.

Target Details

Target:	ELOVL4
Alternative Name:	ELOVL4 (ELOVL4 Products)
Background:	ELOVL4 is a membrane-bound protein which is a member of the ELO family, proteins which participate in the biosynthesis of fatty acids. Consistent with the expression of the encoded protein in photoreceptor cells of the retina, mutations and small deletions in this gene are

Target Details

associated with Stargardt-like macular dystrophy (STGD3) and autosomal dominant Stargardt-like macular dystrophy (ADMD), also referred to as autosomal dominant atrophic macular degeneration.

Molecular Weight: 37 kDa

Gene ID: 6785

UniProt: [Q9GZR5](#)

Application Details

Application Notes: For WB starting dilution is: 1:1000

Restrictions: For Research Use only

Handling

Format: Liquid

Concentration: 0.5 mg/mL

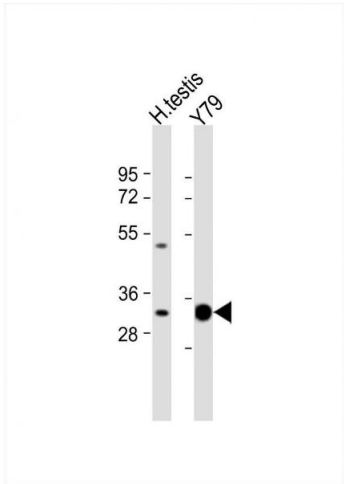
Buffer: Supplied in PBS with 0.09 % (W/V) sodium azide.

Preservative: Sodium azide

Precaution of Use: This product contains Sodium azide: a POISONOUS AND HAZARDOUS SUBSTANCE which should be handled by trained staff only.

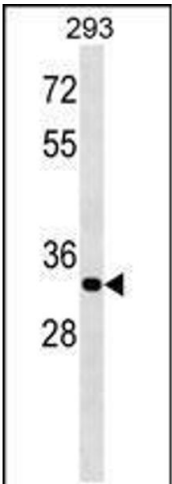
Storage: 4 °C, -20 °C

Storage Comment: Store at 4°C for three months and -20°C, stable for up to one year. As with all antibodies care should be taken to avoid repeated freeze thaw cycles. Antibodies should not be exposed to prolonged high temperatures.



Western Blotting

Image 1. Western Blot at 1:1000 dilution Lane 1: human testis lysate Lane 2: Y79 whole cell lysate Lysates/proteins at 20 ug per lane.



Western Blotting

Image 2. Western blot analysis in 293 cell line lysates (35ug/lane).