

Datasheet for ABIN5536081  
**anti-RNASE3 antibody (C-Term)**[Go to Product page](#)

## 3 Images

## Overview

Quantity:	400 µL
Target:	RNASE3 (ECP)
Binding Specificity:	AA 124-151, C-Term
Reactivity:	Human
Host:	Rabbit
Clonality:	Polyclonal
Conjugate:	This RNASE3 antibody is un-conjugated
Application:	Western Blotting (WB), Immunofluorescence (IF)

## Product Details

Immunogen:	This RNASE3 antibody is generated from rabbits immunized with a KLH conjugated synthetic peptide between 124-151 amino acids from the C-terminal region of human RNASE3.
Isotype:	Ig Fraction
Purification:	This antibody is purified through a protein A column, followed by peptide affinity purification.

## Target Details

Target:	RNASE3 (ECP)
Alternative Name:	RNASE3 ( <a href="#">ECP Products</a> )
Background:	Cytotoxin and helminthotoxin with low-efficiency ribonuclease activity. Possesses a wide variety of biological activities. Exhibits antibacterial activity.

## Target Details

Molecular Weight:	18 kDa
Gene ID:	6037
UniProt:	<a href="#">P12724</a>

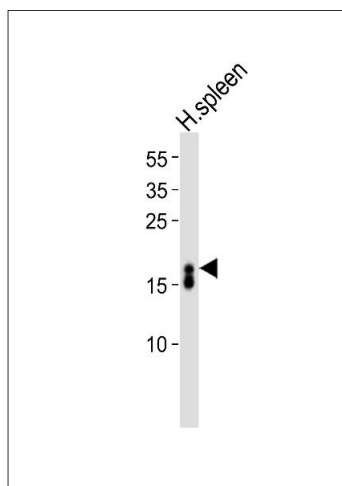
## Application Details

Application Notes:	For WB starting dilution is: 1:1000
	For IF starting dilution is: 1:10~50

Restrictions:	For Research Use only
---------------	-----------------------

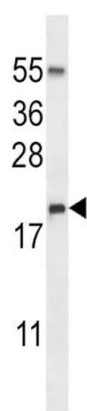
## Handling

Format:	Liquid
Concentration:	0.5 mg/mL
Buffer:	Supplied in PBS with 0.09 % (W/V) sodium azide.
Preservative:	Sodium azide
Precaution of Use:	This product contains Sodium azide: a POISONOUS AND HAZARDOUS SUBSTANCE which should be handled by trained staff only.
Storage:	4 °C,-20 °C
Storage Comment:	Store at 4°C for three months and -20°C, stable for up to one year. As with all antibodies care should be taken to avoid repeated freeze thaw cycles. Antibodies should not be exposed to prolonged high temperatures.



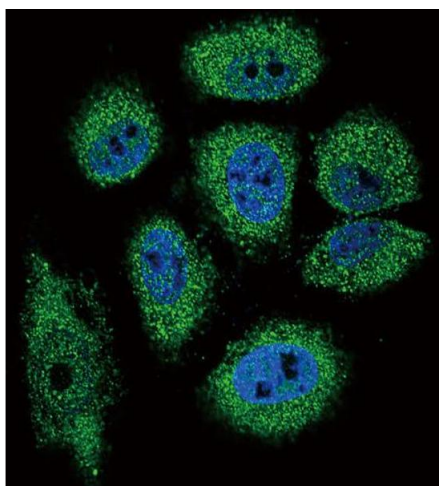
#### Western Blotting

**Image 1.** Western blot analysis of lysate from human spleen tissue lysate, using RNASE3 Antibody at 1:1000.



#### Western Blotting

**Image 2.** Western blot analysis in NCI-H460 cell line lysates (35ug/lane).



#### Immunofluorescence

**Image 3.** Confocal immunofluorescent analysis of RNASE3 Antibody with NCI-H460 cell followed by Alexa Fluor 488-conjugated goat anti-rabbit IgG (green). DAPI was used to stain the cell nuclear (blue).