

Datasheet for ABIN5536110
anti-FERMT1 antibody (AA 268-297)[Go to Product page](#)

2 Images

Overview

Quantity:	400 µL
Target:	FERMT1
Binding Specificity:	AA 268-297
Reactivity:	Human, Mouse
Host:	Rabbit
Clonality:	Polyclonal
Conjugate:	This FERMT1 antibody is un-conjugated
Application:	Western Blotting (WB)

Product Details

Immunogen:	This FERMT1 antibody is generated from rabbits immunized with a KLH conjugated synthetic peptide between 268-297 amino acids from the Central region of human FERMT1.
Isotype:	Ig Fraction
Purification:	This antibody is purified through a protein A column, followed by peptide affinity purification.

Target Details

Target:	FERMT1
Alternative Name:	FERMT1 (FERMT1 Products)
Background:	FERMT1 is a member of the fermitin family, and contains a FERM domain and a pleckstrin homology domain. This protein is involved in integrin signaling and linkage of the actin cytoskeleton to the extracellular matrix.

Target Details

Molecular Weight:	77 kDa
Gene ID:	55612
UniProt:	Q9BQL6

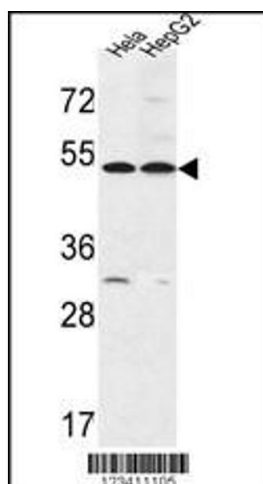
Application Details

Application Notes:	For WB starting dilution is: 1:1000
Restrictions:	For Research Use only

Handling

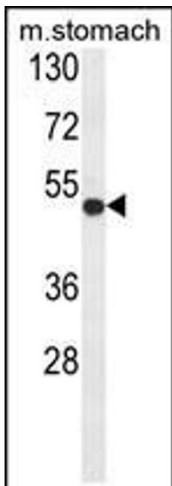
Format:	Liquid
Concentration:	0.34 mg/mL
Buffer:	Supplied in PBS with 0.09 % (W/V) sodium azide.
Preservative:	Sodium azide
Precaution of Use:	This product contains Sodium azide: a POISONOUS AND HAZARDOUS SUBSTANCE which should be handled by trained staff only.
Storage:	4 °C, -20 °C
Storage Comment:	Store at 4°C for three months and -20°C, stable for up to one year. As with all antibodies care should be taken to avoid repeated freeze thaw cycles. Antibodies should not be exposed to prolonged high temperatures.

Images



Western Blotting

Image 1. Western blot analysis in HeLa, HepG2 cell line lysates (35ug/lane).



Western Blotting

Image 2. Western blot analysis of FERMT1 Antibody in mouse stomach tissue lysates (35ug/lane).