

Datasheet for ABIN5536117  
**anti-FOSL2 antibody (C-Term)**



[Go to Product page](#)

2 Images

## Overview

Quantity:	400 µL
Target:	FOSL2
Binding Specificity:	AA 220-248, C-Term
Reactivity:	Human
Host:	Rabbit
Clonality:	Polyclonal
Conjugate:	This FOSL2 antibody is un-conjugated
Application:	Western Blotting (WB), Immunofluorescence (IF)

## Product Details

Immunogen:	This FOSL2 antibody is generated from rabbits immunized with a KLH conjugated synthetic peptide between 220-248 amino acids from the C-terminal region of human FOSL2.
Isotype:	Ig Fraction
Purification:	This antibody is purified through a protein A column, followed by peptide affinity purification.

## Target Details

Target:	FOSL2
Alternative Name:	FOSL2 ( <a href="#">FOSL2 Products</a> )
Background:	The Fos gene family consists of 4 members: FOS, FOSB, FOSL1, and FOSL2. These genes encode leucine zipper proteins that can dimerize with proteins of the JUN family, thereby forming the transcription factor complex AP-1. As such, the FOS proteins have been implicated

## Target Details

as regulators of cell proliferation, differentiation, and transformation.

Molecular Weight: 35 kDa

Gene ID: 2355

UniProt: [P15408](#)

Pathways: [Feeding Behaviour](#), [Photoperiodism](#)

## Application Details

Application Notes: For WB starting dilution is: 1:1000

For IF starting dilution is: 1:10~50

Restrictions: For Research Use only

## Handling

Format: Liquid

Concentration: 0.5 mg/mL

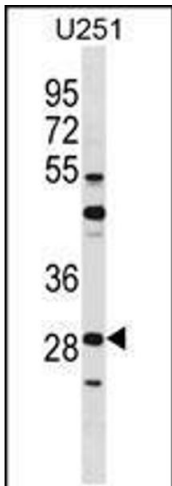
Buffer: Supplied in PBS with 0.09 % (W/V) sodium azide.

Preservative: Sodium azide

Precaution of Use: This product contains Sodium azide: a POISONOUS AND HAZARDOUS SUBSTANCE which should be handled by trained staff only.

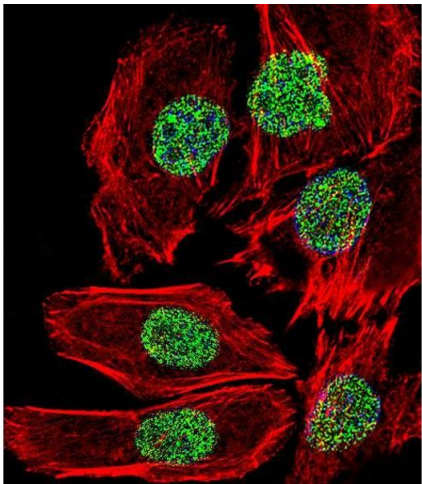
Storage: 4 °C,-20 °C

Storage Comment: Store at 4°C for three months and -20°C, stable for up to one year. As with all antibodies care should be taken to avoid repeated freeze thaw cycles. Antibodies should not be exposed to prolonged high temperatures.



**Western Blotting**

**Image 1.** Western blot analysis in U251 cell line lysates (35ug/lane).



**Immunofluorescence**

**Image 2.** Fluorescent confocal image of A549 cell stained with FOSL2 Antibody .A549 cells were fixed with 4% PFA (20 min), permeabilized with Triton X-100 (0.1%, 10 min), then incubated with FOSL2 primary antibody (1:25). For secondary antibody, Alexa Fluor 488 conjugated donkey anti-rabbit antibody (green) was used (1:400).Cytoplasmic actin was counterstained with Alexa Fluor 555 (red) conjugated Phalloidin (7units/ml). Nuclei were counterstained with DAPI (blue) (10 ug/ml, 10 min). FOSL2 immunoreactivity is localized to Nucleus significantly.