

Datasheet for ABIN5536150  
**anti-GABRA4 antibody (AA 350-377)**

## 3 Images

[Go to Product page](#)

## Overview

Quantity:	400 µL
Target:	GABRA4
Binding Specificity:	AA 350-377
Reactivity:	Human
Host:	Rabbit
Clonality:	Polyclonal
Conjugate:	This GABRA4 antibody is un-conjugated
Application:	Western Blotting (WB), Flow Cytometry (FACS), Immunohistochemistry (Paraffin-embedded Sections) (IHC (p))

## Product Details

Immunogen:	This GABRA4 antibody is generated from rabbits immunized with a KLH conjugated synthetic peptide between 350-377 amino acids from the Central region of human GABRA4.
Isotype:	Ig Fraction
Purification:	This antibody is purified through a protein A column, followed by peptide affinity purification.

## Target Details

Target:	GABRA4
Alternative Name:	GABRA4 ( <a href="#">GABRA4 Products</a> )
Background:	GABRA4 is the major inhibitory neurotransmitter in the mammalian brain where it acts at GABA-A receptors, which are ligand-gated chloride channels. Chloride conductance of these channels

## Target Details

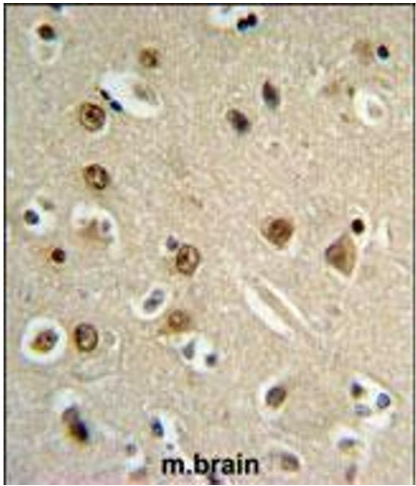
	can be modulated by agents such as benzodiazepines that bind to the GABA-A receptor.
Molecular Weight:	62 kDa
Gene ID:	2557
UniProt:	<a href="#">P48169</a>
Pathways:	<a href="#">Synaptic Membrane</a>

## Application Details

Application Notes:	For WB starting dilution is: 1:1000
	For IHC-P starting dilution is: 1:50~100
	For FACS starting dilution is: 1:10~50
Restrictions:	For Research Use only

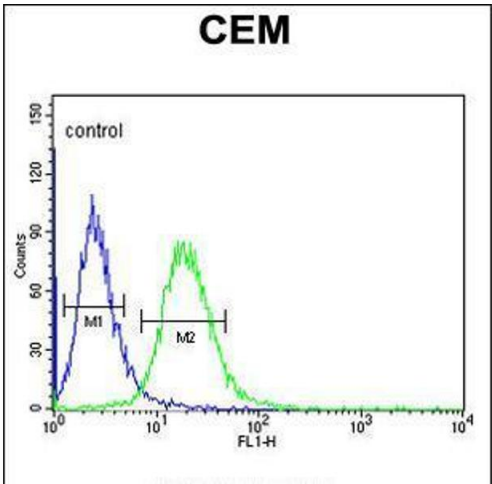
## Handling

Format:	Liquid
Buffer:	Supplied in PBS with 0.09 % (W/V) sodium azide.
Preservative:	Sodium azide
Precaution of Use:	This product contains Sodium azide: a POISONOUS AND HAZARDOUS SUBSTANCE which should be handled by trained staff only.
Storage:	4 °C,-20 °C
Storage Comment:	Store at 4°C for three months and -20°C, stable for up to one year. As with all antibodies care should be taken to avoid repeated freeze thaw cycles. Antibodies should not be exposed to prolonged high temperatures.



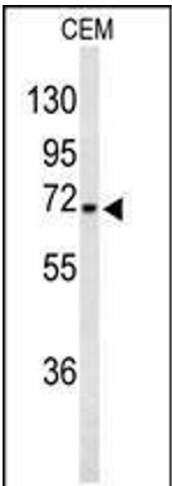
Immunohistochemistry

**Image 1.** GABRA4 Antibody IHC analysis in formalin fixed and paraffin embedded brain tissue followed by peroxidase conjugation of the secondary antibody and DAB staining.



Flow Cytometry

**Image 2.** Flow cytometric analysis of CEM cells (right histogram) compared to a negative control cell (left histogram). FITC-conjugated goat-anti-rabbit secondary antibodies were used for the analysis.



Western Blotting

**Image 3.** Western blot analysis of GABRA4 Antibody in CEM cell line lysates (35ug/lane)