



[Go to Product page](#)

Datasheet for ABIN5536152
anti-GABRG2 antibody (AA 198-224)

3 Images

Overview

Quantity:	400 µL
Target:	GABRG2
Binding Specificity:	AA 198-224
Reactivity:	Human, Mouse
Host:	Rabbit
Clonality:	Polyclonal
Conjugate:	This GABRG2 antibody is un-conjugated
Application:	Western Blotting (WB), Immunohistochemistry (Paraffin-embedded Sections) (IHC (p))

Product Details

Immunogen:	This GABRG2 antibody is generated from rabbits immunized with a KLH conjugated synthetic peptide between 198-224 amino acids from the Central region of human GABRG2.
Isotype:	Ig Fraction
Purification:	This antibody is purified through a protein A column, followed by peptide affinity purification.

Target Details

Target:	GABRG2
Alternative Name:	GABRG2 (GABRG2 Products)
Background:	This gene encodes a gamma-aminobutyric acid (GABA) receptor. GABA is the major inhibitory neurotransmitter in the mammalian brain, where it acts at GABA-A receptors, which are ligand-gated chloride channels. GABA-A receptors are pentameric, consisting of proteins from several

Target Details

subunit classes: alpha, beta, gamma, delta and rho. Mutations in this gene have been associated with epilepsy and febrile seizures. Multiple transcript variants encoding different isoforms have been identified for this gene.

Molecular Weight: 54 kDa

Gene ID: 2566

UniProt: [P18507](#)

Application Details

Application Notes: For WB starting dilution is: 1:1000

For IHC-P starting dilution is: 1:50~100

Restrictions: For Research Use only

Handling

Format: Liquid

Concentration: 0.4 mg/mL

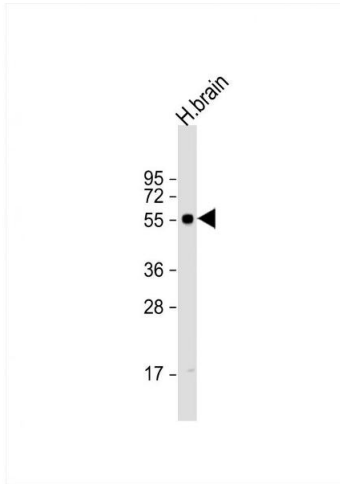
Buffer: Supplied in PBS with 0.09 % (W/V) sodium azide.

Preservative: Sodium azide

Precaution of Use: This product contains Sodium azide: a POISONOUS AND HAZARDOUS SUBSTANCE which should be handled by trained staff only.

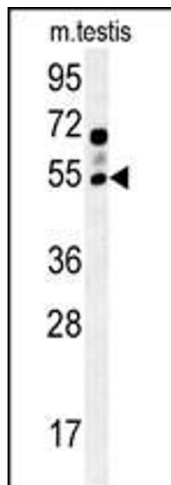
Storage: 4 °C,-20 °C

Storage Comment: Store at 4°C for three months and -20°C, stable for up to one year. As with all antibodies care should be taken to avoid repeated freeze thaw cycles. Antibodies should not be exposed to prolonged high temperatures.



Western Blotting

Image 1. Western Blot at 1:1000 dilution + human brain lysate Lysates/proteins at 20 ug per lane.



Western Blotting

Image 2. Western blot analysis in mouse testis tissue lysates (15ug/lane). This demonstrates the detected GABRG2 protein (arrow).



Immunohistochemistry

Image 3. GABRG2 antibody immunohistochemistry analysis in formalin fixed and paraffin embedded human brain tissue followed by peroxidase conjugation of the secondary antibody and DAB staining.