



[Go to Product page](#)

Datasheet for ABIN5536178

anti-MAP4K3 antibody (AA 501-529)

3 Images

Overview

Quantity:	400 µL
Target:	MAP4K3
Binding Specificity:	AA 501-529
Reactivity:	Human, Mouse
Host:	Rabbit
Clonality:	Polyclonal
Conjugate:	This MAP4K3 antibody is un-conjugated
Application:	Western Blotting (WB), Flow Cytometry (FACS), Immunohistochemistry (Paraffin-embedded Sections) (IHC (p))

Product Details

Immunogen:	This Mouse Map4k3 antibody is generated from rabbits immunized with a KLH conjugated synthetic peptide between 501-529 amino acids from the Central region of mouse Map4k3.
Isotype:	Ig Fraction
Purification:	This antibody is purified through a protein A column, followed by peptide affinity purification.

Target Details

Target:	MAP4K3
Alternative Name:	Map4k3 (MAP4K3 Products)
Background:	Map4k3 may play a role in the response to environmental stress. Appears to act upstream of the JUN N-terminal pathway (By similarity).

Target Details

Molecular Weight: 101 kDa

Gene ID: 225028

UniProt: [Q99JP0](#)

Pathways: [MAPK Signaling](#)

Application Details

Application Notes: For WB starting dilution is: 1:1000

For FACS starting dilution is: 1:10~50

For IHC-P starting dilution is: 1:10~50

Restrictions: For Research Use only

Handling

Format: Liquid

Concentration: 0.5 mg/mL

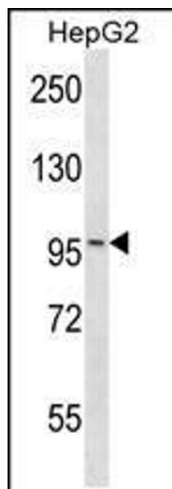
Buffer: Supplied in PBS with 0.09 % (W/V) sodium azide.

Preservative: Sodium azide

Precaution of Use: This product contains Sodium azide: a POISONOUS AND HAZARDOUS SUBSTANCE which should be handled by trained staff only.

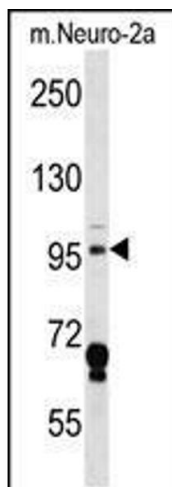
Storage: 4 °C, -20 °C

Storage Comment: Store at 4°C for three months and -20°C, stable for up to one year. As with all antibodies care should be taken to avoid repeated freeze thaw cycles. Antibodies should not be exposed to prolonged high temperatures.



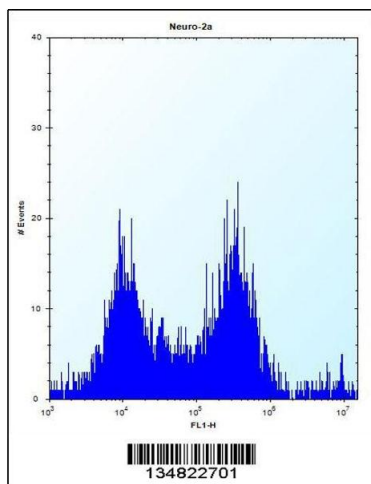
Western Blotting

Image 1. Western blot analysis in HepG2 cell line lysates (35ug/lane).



Western Blotting

Image 2. Western blot analysis in mouse Neuro-2a cell line lysates (35ug/lane).



Flow Cytometry

Image 3. Flow cytometric analysis of Neuro-2a cells (right histogram) compared to a negative control cell (left histogram). FITC-conjugated donkey-anti-rabbit secondary antibodies were used for the analysis.