

Datasheet for ABIN5536203
anti-GTF2E1 antibody (N-Term)[Go to Product page](#)

2 Images

Overview

Quantity:	400 µL
Target:	GTF2E1
Binding Specificity:	AA 93-121, N-Term
Reactivity:	Human
Host:	Rabbit
Clonality:	Polyclonal
Conjugate:	This GTF2E1 antibody is un-conjugated
Application:	Western Blotting (WB), Immunohistochemistry (Paraffin-embedded Sections) (IHC (p))

Product Details

Immunogen:	This GTF2E1 antibody is generated from rabbits immunized with a KLH conjugated synthetic peptide between 93-121 amino acids from the N-terminal region of human GTF2E1.
Isotype:	Ig Fraction
Purification:	This antibody is purified through a protein A column, followed by peptide affinity purification.

Target Details

Target:	GTF2E1
Alternative Name:	GTF2E1 (GTF2E1 Products)
Background:	Recruits TFIID to the initiation complex and stimulates the RNA polymerase II C-terminal domain kinase and DNA-dependent ATPase activities of TFIID. Both TFIID and TFIIE are required for promoter clearance by RNA polymerase.

Target Details

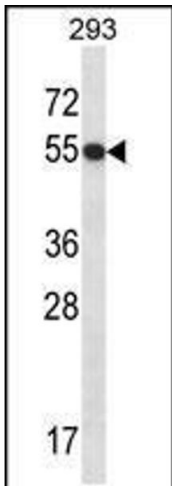
Molecular Weight:	49 kDa
Gene ID:	2960
UniProt:	P29083

Application Details

Application Notes:	For WB starting dilution is: 1:1000 For IHC-P starting dilution is: 1:10~50
Restrictions:	For Research Use only

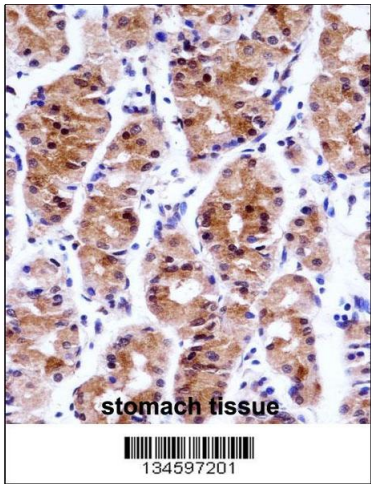
Handling

Format:	Liquid
Concentration:	0.35 mg/mL
Buffer:	Supplied in PBS with 0.09 % (W/V) sodium azide.
Preservative:	Sodium azide
Precaution of Use:	This product contains Sodium azide: a POISONOUS AND HAZARDOUS SUBSTANCE which should be handled by trained staff only.
Storage:	4 °C,-20 °C
Storage Comment:	Store at 4°C for three months and -20°C, stable for up to one year. As with all antibodies care should be taken to avoid repeated freeze thaw cycles. Antibodies should not be exposed to prolonged high temperatures.



Western Blotting

Image 1. Western blot analysis in 293 cell line lysates (35ug/lane).



Immunohistochemistry

Image 2. GTF2E1 Antibody immunohistochemistry analysis in formalin fixed and paraffin embedded human stomach tissue followed by peroxidase conjugation of the secondary antibody and DAB staining.