



[Go to Product page](#)

Datasheet for ABIN5536207  
**anti-OLA1 antibody (N-Term)**

2 Images

Overview

Quantity:	400 µL
Target:	OLA1
Binding Specificity:	AA 43-71, N-Term
Reactivity:	Human
Host:	Rabbit
Clonality:	Polyclonal
Conjugate:	This OLA1 antibody is un-conjugated
Application:	Western Blotting (WB)

Product Details

Immunogen:	This OLA1 antibody is generated from rabbits immunized with a KLH conjugated synthetic peptide between 43-71 amino acids from the N-terminal region of human OLA1.
Isotype:	Ig Fraction
Purification:	This antibody is purified through a protein A column, followed by peptide affinity purification.

Target Details

Target:	OLA1
Alternative Name:	OLA1 ( <a href="#">OLA1 Products</a> )
Background:	Hydrolyzes ATP, and can also hydrolyze GTP with lower efficiency. Has lower affinity for GTP.
Molecular Weight:	45 kDa

## Target Details

Gene ID: 29789

UniProt: [Q9NTK5](#)

## Application Details

Application Notes: For WB starting dilution is: 1:1000

Restrictions: For Research Use only

## Handling

Format: Liquid

Concentration: 0.5 mg/mL

Buffer: Supplied in PBS with 0.09 % (W/V) sodium azide.

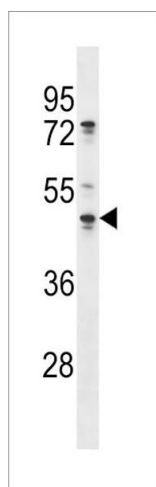
Preservative: Sodium azide

Precaution of Use: This product contains Sodium azide: a POISONOUS AND HAZARDOUS SUBSTANCE which should be handled by trained staff only.

Storage: 4 °C,-20 °C

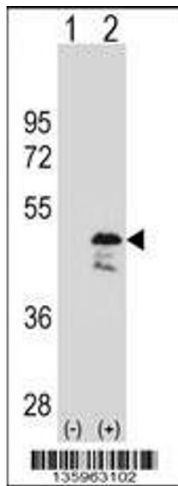
Storage Comment: Store at 4°C for three months and -20°C, stable for up to one year. As with all antibodies care should be taken to avoid repeated freeze thaw cycles. Antibodies should not be exposed to prolonged high temperatures.

## Images



### Western Blotting

**Image 1.** Western blot analysis in A375 cell line lysates (35ug/lane).



### Western Blotting

**Image 2.** Western blot analysis of OLA1 using rabbit polyclonal OLA1 Antibody using 293 cell lysates (2 ug/lane) either nontransfected (Lane 1) or transiently transfected (Lane 2) with the OLA1 gene.