

Datasheet for ABIN5536339  
**anti-KLF9 antibody (N-Term)**

## 3 Images

[Go to Product page](#)

## Overview

Quantity:	400 µL
Target:	KLF9
Binding Specificity:	AA 29-57, N-Term
Reactivity:	Human, Rat
Host:	Rabbit
Clonality:	Polyclonal
Conjugate:	This KLF9 antibody is un-conjugated
Application:	Western Blotting (WB), Immunofluorescence (IF)

## Product Details

Immunogen:	This KLF9 antibody is generated from rabbits immunized with a KLH conjugated synthetic peptide between 29-57 amino acids from the N-terminal region of human KLF9.
Isotype:	Ig Fraction
Purification:	This antibody is purified through a protein A column, followed by peptide affinity purification.

## Target Details

Target:	KLF9
Alternative Name:	KLF9 ( <a href="#">KLF9 Products</a> )
Background:	The protein encoded by this gene is a transcription factor that binds to GC box elements located in the promoter. Binding of the encoded protein to a single GC box inhibits mRNA expression while binding to tandemly repeated GC box elements activates transcription.

## Target Details

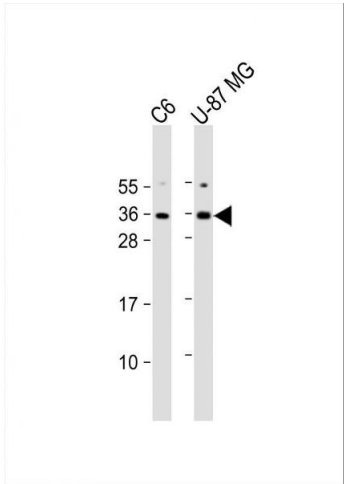
Molecular Weight:	27 kDa
Gene ID:	687
UniProt:	<a href="#">Q13886</a>
Pathways:	<a href="#">Intracellular Steroid Hormone Receptor Signaling Pathway</a>

## Application Details

Application Notes:	For WB starting dilution is: 1:1000  For IF starting dilution is: 1:10~50
Restrictions:	For Research Use only

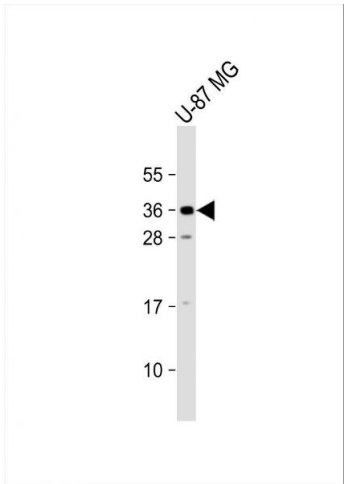
## Handling

Format:	Liquid
Concentration:	0.33 mg/mL
Buffer:	Supplied in PBS with 0.09 % (W/V) sodium azide.
Preservative:	Sodium azide
Precaution of Use:	This product contains Sodium azide: a POISONOUS AND HAZARDOUS SUBSTANCE which should be handled by trained staff only.
Storage:	4 °C, -20 °C
Storage Comment:	Store at 4°C for three months and -20°C, stable for up to one year. As with all antibodies care should be taken to avoid repeated freeze thaw cycles. Antibodies should not be exposed to prolonged high temperatures.



#### Western Blotting

**Image 1.** Western Blot at 1:1000 dilution Lane 1: C6 whole cell lysate Lane 2: U-87 MG whole cell lysate Lysates/proteins at 20 ug per lane.



#### Western Blotting

**Image 2.** Western Blot at 1:2000 dilution + U-87 MG whole cell lysate Lysates/proteins at 20 ug per lane.



#### Western Blotting

**Image 3.** Western blot analysis in WiDr cell line lysates (35ug/lane).