

Datasheet for ABIN5536340  
**anti-KLHDC1 antibody (N-Term)**[Go to Product page](#)

## 2 Images

## Overview

Quantity:	400 µL
Target:	KLHDC1
Binding Specificity:	AA 69-97, N-Term
Reactivity:	Human, Mouse
Host:	Rabbit
Clonality:	Polyclonal
Conjugate:	This KLHDC1 antibody is un-conjugated
Application:	Western Blotting (WB), Immunohistochemistry (Paraffin-embedded Sections) (IHC (p))

## Product Details

Immunogen:	This KLHDC1 antibody is generated from rabbits immunized with a KLH conjugated synthetic peptide between 69-97 amino acids from the N-terminal region of human KLHDC1.
Isotype:	Ig Fraction
Purification:	This antibody is purified through a protein A column, followed by peptide affinity purification.

## Target Details

Target:	KLHDC1
Alternative Name:	KLHDC1 ( <a href="#">KLHDC1 Products</a> )
Background:	KLHDC1 contains 6 Kelch repeats and is widely expressed, with high levels in skeletal muscle, pancreas and liver. KLHDC1 and KLHDC2 have differential localization and activity in cultured mammalian cells. The exact function of KLHDC1 remains unknown.

## Target Details

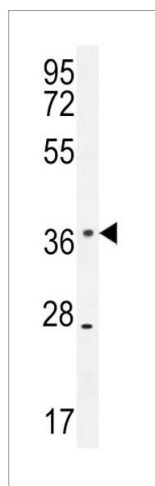
Molecular Weight:	47 kDa
Gene ID:	122773
UniProt:	<a href="#">Q8N7A1</a>

## Application Details

Application Notes:	For WB starting dilution is: 1:1000  For IHC-P starting dilution is: 1:50~100
Restrictions:	For Research Use only

## Handling

Format:	Liquid
Concentration:	0.41 mg/mL
Buffer:	Supplied in PBS with 0.09 % (W/V) sodium azide.
Preservative:	Sodium azide
Precaution of Use:	This product contains Sodium azide: a POISONOUS AND HAZARDOUS SUBSTANCE which should be handled by trained staff only.
Storage:	4 °C,-20 °C
Storage Comment:	Store at 4°C for three months and -20°C, stable for up to one year. As with all antibodies care should be taken to avoid repeated freeze thaw cycles. Antibodies should not be exposed to prolonged high temperatures.



#### Western Blotting

**Image 1.** Western blot analysis in mouse spleen tissue lysates (35ug/lane).



#### Immunohistochemistry

**Image 2.** KLHDC1 antibody immunohistochemistry analysis in formalin fixed and paraffin embedded human skeletal muscle followed by peroxidase conjugation of the secondary antibody and DAB staining.