

Datasheet for ABIN5536341

anti-Kallikrein 12 antibody (AA 85-113)[Go to Product page](#)**1** Image

Overview

Quantity:	400 µL
Target:	Kallikrein 12 (KLK12)
Binding Specificity:	AA 85-113
Reactivity:	Human
Host:	Rabbit
Clonality:	Polyclonal
Conjugate:	This Kallikrein 12 antibody is un-conjugated
Application:	Western Blotting (WB)

Product Details

Immunogen:	This KLK12 antibody is generated from rabbits immunized with a KLH conjugated synthetic peptide between 85-113 amino acids from the Central region of human KLK12.
Isotype:	Ig Fraction
Purification:	This antibody is purified through a protein A column, followed by peptide affinity purification.

Target Details

Target:	Kallikrein 12 (KLK12)
Alternative Name:	KLK12 (KLK12 Products)
Background:	Kallikreins are a subgroup of serine proteases having diverse physiological functions. Growing evidence suggests that many kallikreins are implicated in carcinogenesis and some have potential as novel cancer and other disease biomarkers. This gene is one of the fifteen kallikrein

Target Details

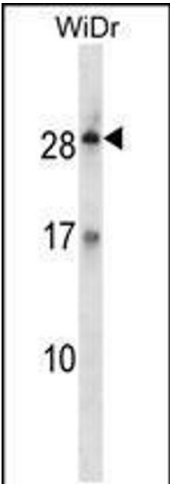
	subfamily members located in a cluster on chromosome 19. Alternate splicing of this gene results in three transcript variants encoding different isoforms. [provided by RefSeq].
Molecular Weight:	27 kDa
Gene ID:	43849
UniProt:	Q9UKR0
Pathways:	Complement System

Application Details

Application Notes:	For WB starting dilution is: 1:1000
Restrictions:	For Research Use only

Handling

Format:	Liquid
Concentration:	0.45 mg/mL
Buffer:	Supplied in PBS with 0.09 % (W/V) sodium azide.
Preservative:	Sodium azide
Precaution of Use:	This product contains Sodium azide: a POISONOUS AND HAZARDOUS SUBSTANCE which should be handled by trained staff only.
Storage:	4 °C, -20 °C
Storage Comment:	Store at 4°C for three months and -20°C, stable for up to one year. As with all antibodies care should be taken to avoid repeated freeze thaw cycles. Antibodies should not be exposed to prolonged high temperatures.



Western Blotting

Image 1. Western blot analysis in WiDr cell line lysates (35ug/lane).