

Datasheet for ABIN5536350  
**anti-PRODH2 antibody (AA 172-200)**[Go to Product page](#)

## 1 Image

## Overview

Quantity:	400 µL
Target:	PRODH2
Binding Specificity:	AA 172-200
Reactivity:	Human
Host:	Rabbit
Clonality:	Polyclonal
Conjugate:	This PRODH2 antibody is un-conjugated
Application:	Western Blotting (WB)

## Product Details

Immunogen:	This PRODH2 antibody is generated from rabbits immunized with a KLH conjugated synthetic peptide between 172-200 amino acids from the Central region of human PRODH2.
Isotype:	Ig Fraction
Purification:	This antibody is purified through a protein A column, followed by peptide affinity purification.

## Target Details

Target:	PRODH2
Alternative Name:	PRODH2 ( <a href="#">PRODH2 Products</a> )
Background:	The protein encoded by this gene is similar to proline dehydrogenase (oxidase) 1, a mitochondrial enzyme which catalyzes the first step in proline catabolism. The function of this protein has not been determined.

## Target Details

Molecular Weight:	59 kDa
Gene ID:	58510
UniProt:	<a href="#">Q9UF12</a>

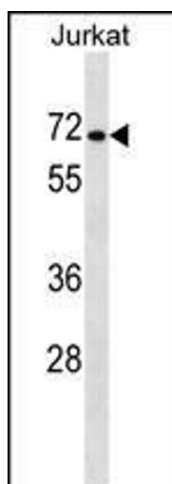
## Application Details

Application Notes:	For WB starting dilution is: 1:1000
Restrictions:	For Research Use only

## Handling

Format:	Liquid
Concentration:	0.4 mg/mL
Buffer:	Supplied in PBS with 0.09 % (W/V) sodium azide.
Preservative:	Sodium azide
Precaution of Use:	This product contains Sodium azide: a POISONOUS AND HAZARDOUS SUBSTANCE which should be handled by trained staff only.
Storage:	4 °C, -20 °C
Storage Comment:	Store at 4°C for three months and -20°C, stable for up to one year. As with all antibodies care should be taken to avoid repeated freeze thaw cycles. Antibodies should not be exposed to prolonged high temperatures.

## Images



### Western Blotting

**Image 1.** Western blot analysis in Jurkat cell line lysates (35ug/lane).