

Datasheet for ABIN5536364
anti-LIN28B antibody (AA 95-128)[Go to Product page](#)

3 Images

Overview

Quantity:	200 µL
Target:	LIN28B
Binding Specificity:	AA 95-128
Reactivity:	Human
Host:	Rabbit
Clonality:	Polyclonal
Conjugate:	This LIN28B antibody is un-conjugated
Application:	Western Blotting (WB), Flow Cytometry (FACS), Immunofluorescence (IF), Immunohistochemistry (Paraffin-embedded Sections) (IHC (p))

Product Details

Immunogen:	This LIN28B antibody is generated from rabbits immunized with a KLH conjugated synthetic peptide between 95-128 amino acids from the Central region of human LIN28B.
Isotype:	Ig Fraction
Purification:	This antibody is purified through a protein A column, followed by peptide affinity purification.

Target Details

Target:	LIN28B
Alternative Name:	LIN28B (LIN28B Products)
Background:	Lin-28 homolog B (LIN28B) is overexpressed in hepatocellular carcinoma. The heterochronic gene lin-28 is a key regulator of developmental timing in the nematode <i>Caenorhabditis elegans</i> .

Target Details

Similar with lin-28 proteins, LIN28B conserves a cold shock domain and a pair of CCHC zinc finger domains. Phylogenetic analysis suggests that they might arise as a result of duplication from an ancestral gene. Overexpression of LIN28B was noted in most HCC cell lines and clinical samples. A short LIN28B isoform was also identified in non-tumor liver tissue and fetal liver. Although predominantly localized in the cytoplasm, LIN28B protein shows cell cycle-dependent nuclear translocation in Huh7 cells. Induced expression of exogenous LIN28B in a tet-off cell line promoted cancer cell proliferation.

Molecular Weight: 27 kDa

Gene ID: 389421

UniProt: [Q6ZN17](#)

Application Details

Application Notes: For IHC-P starting dilution is: 1:25

For WB starting dilution is: 1:1000

Restrictions: For Research Use only

Handling

Format: Liquid

Concentration: 0.33 mg/mL

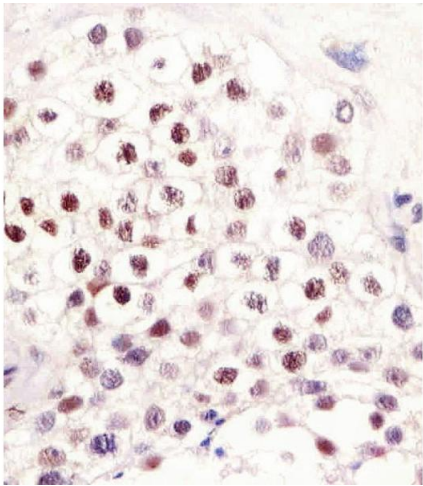
Buffer: Supplied in PBS with 0.09 % (W/V) sodium azide.

Preservative: Sodium azide

Precaution of Use: This product contains Sodium azide: a POISONOUS AND HAZARDOUS SUBSTANCE which should be handled by trained staff only.

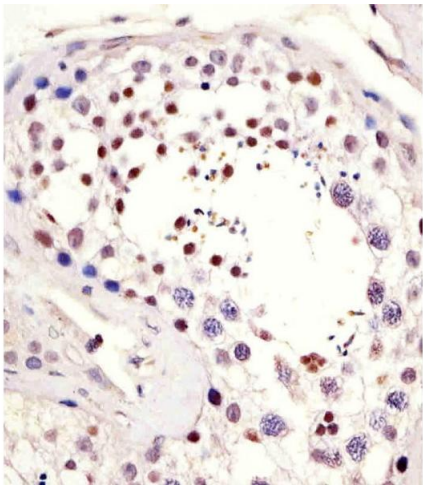
Storage: 4 °C, -20 °C

Storage Comment: Store at 4°C for three months and -20°C, stable for up to one year. As with all antibodies care should be taken to avoid repeated freeze thaw cycles. Antibodies should not be exposed to prolonged high temperatures.



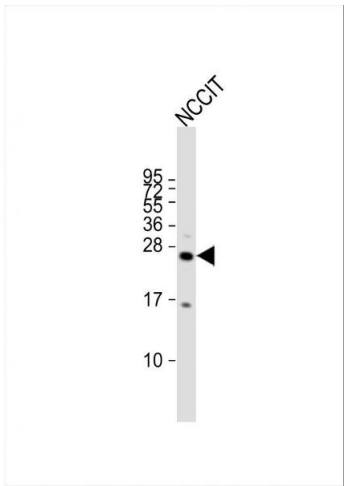
Immunohistochemistry

Image 1. Antibody staining LIN28B in human testis tissue sections by Immunohistochemistry (IHC-P - paraformaldehyde-fixed, paraffin-embedded sections).



Immunohistochemistry

Image 2. Antibody staining LIN28B in human testis tissue sections by Immunohistochemistry (IHC-P - paraformaldehyde-fixed, paraffin-embedded sections).



Western Blotting

Image 3. Western Blot at 1:2000 dilution + NCCIT whole cell lysate Lysates/proteins at 20 ug per lane.