

Datasheet for ABIN5536402
anti-PLA2G12A antibody (AA 55-83)[Go to Product page](#)

2 Images

Overview

Quantity:	400 µL
Target:	PLA2G12A
Binding Specificity:	AA 55-83
Reactivity:	Human
Host:	Rabbit
Clonality:	Polyclonal
Conjugate:	This PLA2G12A antibody is un-conjugated
Application:	Western Blotting (WB)

Product Details

Immunogen:	This PLA2G12A antibody is generated from rabbits immunized with a KLH conjugated synthetic peptide between 55-83 amino acids from the Central region of human PLA2G12A.
Isotype:	Ig Fraction
Purification:	This antibody is purified through a protein A column, followed by peptide affinity purification.

Target Details

Target:	PLA2G12A
Alternative Name:	PLA2G12A (PLA2G12A Products)
Background:	Secreted phospholipase A2 (sPLA2) enzymes liberate arachidonic acid from phospholipids for production of eicosanoids and exert a variety of physiologic and pathologic effects. Group XII sPLA2s, such as PLA2G12A, have relatively low specific activity and are structurally and

Target Details

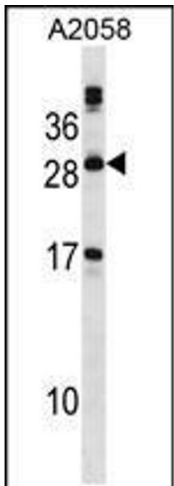
	functionally distinct from other sPLA2s (Gelb et al., 2000 [PubMed 11031251]).
Molecular Weight:	21 kDa
Gene ID:	81579
UniProt:	Q9BZM1
Pathways:	Inositol Metabolic Process

Application Details

Application Notes:	For WB starting dilution is: 1:1000
Restrictions:	For Research Use only

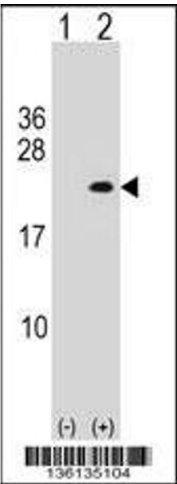
Handling

Format:	Liquid
Concentration:	0.5 mg/mL
Buffer:	Supplied in PBS with 0.09 % (W/V) sodium azide.
Preservative:	Sodium azide
Precaution of Use:	This product contains Sodium azide: a POISONOUS AND HAZARDOUS SUBSTANCE which should be handled by trained staff only.
Storage:	4 °C,-20 °C
Storage Comment:	Store at 4°C for three months and -20°C, stable for up to one year. As with all antibodies care should be taken to avoid repeated freeze thaw cycles. Antibodies should not be exposed to prolonged high temperatures.



Western Blotting

Image 1. Western blot analysis in A2058 cell line lysates (35ug/lane).



Western Blotting

Image 2. Western blot analysis of PLA2G12A using rabbit polyclonal PLA2G12A Antibody using 293 cell lysates (2 ug/lane) either nontransfected (Lane 1) or transiently transfected (Lane 2) with the PLA2G12A gene.