

Datasheet for ABIN5536451
anti-KPTN antibody (AA 245-273)



[Go to Product page](#)

1 Image

Overview

Quantity:	400 µL
Target:	KPTN
Binding Specificity:	AA 245-273
Reactivity:	Human
Host:	Rabbit
Clonality:	Polyclonal
Conjugate:	This KPTN antibody is un-conjugated
Application:	Western Blotting (WB)

Product Details

Immunogen:	This KPTN antibody is generated from rabbits immunized with a KLH conjugated synthetic peptide between 245-273 amino acids from the Central region of human KPTN.
Isotype:	Ig Fraction
Purification:	This antibody is purified through a protein A column, followed by peptide affinity purification.

Target Details

Target:	KPTN
Alternative Name:	KPTN (KPTN Products)
Background:	KPTN may be involved in actin dynamics. May play a role in producing the sensory apparatus in hair cells. May play a role in actin rearrangements that accompany platelet activation and stereocilia formation.

Target Details

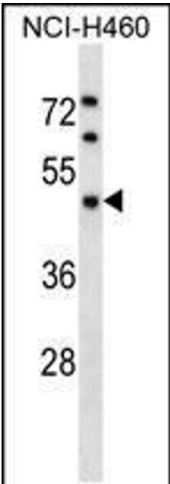
Molecular Weight:	48 kDa
Gene ID:	11133
UniProt:	Q9Y664
Pathways:	Sensory Perception of Sound

Application Details

Application Notes:	For WB starting dilution is: 1:1000
Restrictions:	For Research Use only

Handling

Format:	Liquid
Concentration:	0.5 mg/mL
Buffer:	Supplied in PBS with 0.09 % (W/V) sodium azide.
Preservative:	Sodium azide
Precaution of Use:	This product contains Sodium azide: a POISONOUS AND HAZARDOUS SUBSTANCE which should be handled by trained staff only.
Storage:	4 °C,-20 °C
Storage Comment:	Store at 4°C for three months and -20°C, stable for up to one year. As with all antibodies care should be taken to avoid repeated freeze thaw cycles. Antibodies should not be exposed to prolonged high temperatures.



Western Blotting

Image 1. Western blot analysis in NCI-H460 cell line lysates (35ug/lane).