

Datasheet for ABIN5536458
anti-PSMD10 antibody (AA 43-76)

3 Images

[Go to Product page](#)

Overview

Quantity:	400 µL
Target:	PSMD10
Binding Specificity:	AA 43-76
Reactivity:	Human
Host:	Rabbit
Clonality:	Polyclonal
Conjugate:	This PSMD10 antibody is un-conjugated
Application:	Western Blotting (WB), Immunofluorescence (IF), Immunohistochemistry (Paraffin-embedded Sections) (IHC (p))

Product Details

Immunogen:	This PSMD10 antibody is generated from a rabbit immunized with a KLH conjugated synthetic peptide between 43-76 amino acids from the Central region of human PSMD10.
Isotype:	Ig Fraction
Purification:	This antibody is purified through a protein A column, followed by peptide affinity purification.

Target Details

Target:	PSMD10
Alternative Name:	PSMD10 (PSMD10 Products)
Background:	Acts as a chaperone during the assembly of the 26S proteasome, specifically of the PA700/19S regulatory complex (RC). In the initial step of the base subcomplex assembly is part of an

Target Details

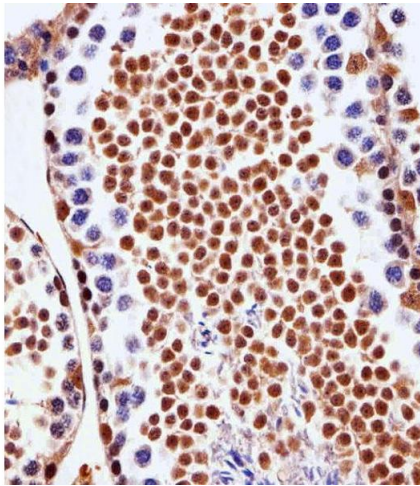
	intermediate PSMD10:PSMC4:PSMC5:PAAF1 module which probably assembles with a PSMD5:PSMC2:PSMC1:PSMD2 module. Independently of the proteasome, regulates EGF-induced AKT activation through inhibition of the RHOA/ROCK/PTEN pathway, leading to prolonged AKT activation. Plays an important role in RAS-induced tumorigenesis.
Molecular Weight:	24 kDa
Gene ID:	5716
UniProt:	O75832
Pathways:	Mitotic G1-G1/S Phases , DNA Replication , Maintenance of Protein Location , Synthesis of DNA , Ubiquitin Proteasome Pathway

Application Details

Application Notes:	For IF starting dilution is: 1:25 For IHC-P starting dilution is: 1:25 For WB starting dilution is: 1:1000
Restrictions:	For Research Use only

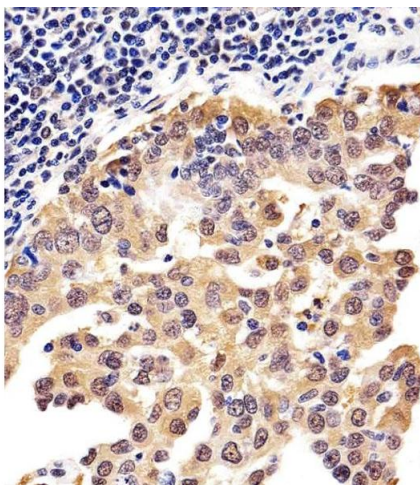
Handling

Format:	Liquid
Concentration:	0.48 mg/mL
Buffer:	Supplied in PBS with 0.09 % (W/V) sodium azide.
Preservative:	Sodium azide
Precaution of Use:	This product contains Sodium azide: a POISONOUS AND HAZARDOUS SUBSTANCE which should be handled by trained staff only.
Storage:	4 °C,-20 °C
Storage Comment:	Store at 4°C for three months and -20°C, stable for up to one year. As with all antibodies care should be taken to avoid repeated freeze thaw cycles. Antibodies should not be exposed to prolonged high temperatures.



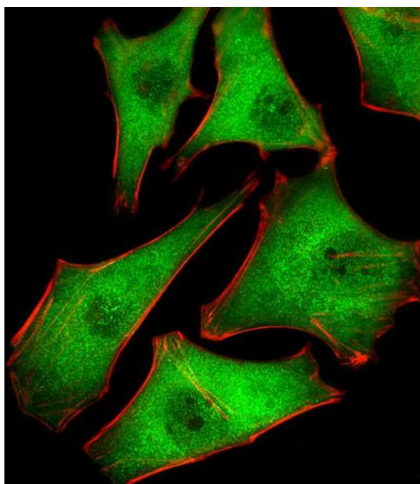
Immunohistochemistry

Image 1. Immunohistochemical analysis of paraffin-embedded M.testis section using PSMD10 Antibody . Antibody was diluted at 1:25 dilution. A peroxidase-conjugated goat anti-rabbit IgG at 1:400 dilution was used as the secondary antibody, followed by DAB staining.



Immunohistochemistry

Image 2. Immunohistochemical analysis of paraffin-embedded H.lung adenocarcinoma section using PSMD10 Antibody . Antibody was diluted at 1:25 dilution. A peroxidase-conjugated goat anti-rabbit IgG at 1:400 dilution was used as the secondary antibody, followed by DAB staining.



Immunofluorescence

Image 3. Fluorescent image of Hela cells stained with PSMD10 Antibody . Antibody was diluted at 1:25 dilution. An Alexa Fluor 488-conjugated goat anti-rabbit IgG at 1:400 dilution was used as the secondary antibody (green). Cytoplasmic actin was counterstained with Alexa Fluor 555 conjugated with Phalloidin (red).