

Datasheet for ABIN5536466
anti-DCP1B antibody (AA 261-290)[Go to Product page](#)

2 Images

Overview

Quantity:	400 µL
Target:	DCP1B
Binding Specificity:	AA 261-290
Reactivity:	Human
Host:	Rabbit
Clonality:	Polyclonal
Conjugate:	This DCP1B antibody is un-conjugated
Application:	Western Blotting (WB), Flow Cytometry (FACS)

Product Details

Immunogen:	This DCP1B antibody is generated from rabbits immunized with a KLH conjugated synthetic peptide between 261-290 amino acids from the Central region of human DCP1B.
Isotype:	Ig Fraction
Purification:	This antibody is purified through a protein A column, followed by peptide affinity purification.

Target Details

Target:	DCP1B
Alternative Name:	DCP1B (DCP1B Products)
Background:	DCP1B is a core component of the mRNA decapping complex, a key factor in the regulation of mRNA decay.

Target Details

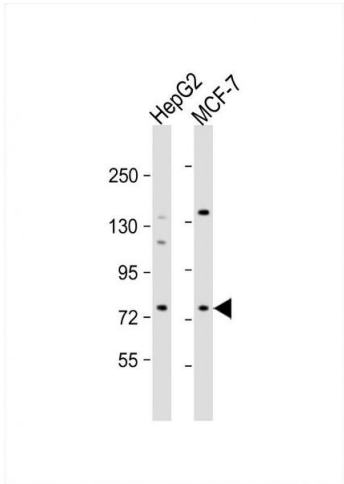
Molecular Weight:	68 kDa
Gene ID:	196513
UniProt:	Q8IZD4

Application Details

Application Notes:	For WB starting dilution is: 1:1000
	For FACS starting dilution is: 1:10~50
Restrictions:	For Research Use only

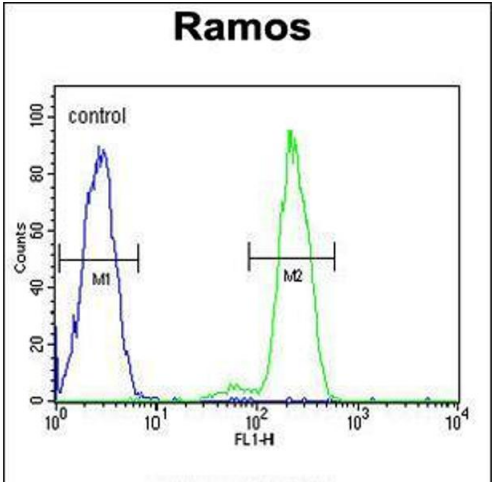
Handling

Format:	Liquid
Concentration:	0.5 mg/mL
Buffer:	Supplied in PBS with 0.09 % (W/V) sodium azide.
Preservative:	Sodium azide
Precaution of Use:	This product contains Sodium azide: a POISONOUS AND HAZARDOUS SUBSTANCE which should be handled by trained staff only.
Storage:	4 °C,-20 °C
Storage Comment:	Store at 4°C for three months and -20°C, stable for up to one year. As with all antibodies care should be taken to avoid repeated freeze thaw cycles. Antibodies should not be exposed to prolonged high temperatures.



Western Blotting

Image 1. Western Blot at 1:1000 dilution Lane 1: HepG2 whole cell lysate Lane 2: MCF-7 whole cell lysate Lysates/proteins at 20 ug per lane.



Flow Cytometry

Image 2. Flow cytometric analysis of Ramos cells (right histogram) compared to a negative control cell (left histogram).FITC-conjugated goat-anti-rabbit secondary antibodies were used for the analysis.