

Datasheet for ABIN5536484
anti-GRHL1 antibody (AA 294-322)



[Go to Product page](#)

1 Image

Overview

Quantity:	400 µL
Target:	GRHL1
Binding Specificity:	AA 294-322
Reactivity:	Human
Host:	Rabbit
Clonality:	Polyclonal
Conjugate:	This GRHL1 antibody is un-conjugated
Application:	Western Blotting (WB)

Product Details

Immunogen:	This GRHL1 antibody is generated from rabbits immunized with a KLH conjugated synthetic peptide between 294-322 amino acids from the Central region of human GRHL1.
Isotype:	Ig Fraction
Purification:	This antibody is purified through a protein A column, followed by peptide affinity purification.

Target Details

Target:	GRHL1
Alternative Name:	GRHL1 (GRHL1 Products)
Background:	GRHL1 is a transcription factor. Isoform 1 may function as an activator and isoform 2 as a repressor in tissues where both forms are expressed. May play a role in development. May be involved in epidermal differentiation (By similarity). Binds and transactivates the EN1 promoter.

Target Details

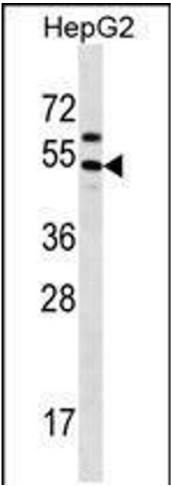
Molecular Weight:	70 kDa
Gene ID:	29841
UniProt:	Q9NZI5
Pathways:	Regulation of Lipid Metabolism by PPARalpha

Application Details

Application Notes:	For WB starting dilution is: 1:1000
Restrictions:	For Research Use only

Handling

Format:	Liquid
Concentration:	0.45 mg/mL
Buffer:	Supplied in PBS with 0.09 % (W/V) sodium azide.
Preservative:	Sodium azide
Precaution of Use:	This product contains Sodium azide: a POISONOUS AND HAZARDOUS SUBSTANCE which should be handled by trained staff only.
Storage:	4 °C,-20 °C
Storage Comment:	Store at 4°C for three months and -20°C, stable for up to one year. As with all antibodies care should be taken to avoid repeated freeze thaw cycles. Antibodies should not be exposed to prolonged high temperatures.



Western Blotting

Image 1. Western blot analysis in HepG2 cell line lysates (35ug/lane).