



[Go to Product page](#)

Datasheet for ABIN5536648
anti-GM2A antibody (N-Term)

2 Images

Overview

Quantity:	400 µL
Target:	GM2A
Binding Specificity:	AA 25-54, N-Term
Reactivity:	Human, Mouse
Host:	Rabbit
Clonality:	Polyclonal
Conjugate:	This GM2A antibody is un-conjugated
Application:	Western Blotting (WB)

Product Details

Immunogen:	This GM2A antibody is generated from rabbits immunized with a KLH conjugated synthetic peptide between 25-54 amino acids from the N-terminal region of human GM2A.
Isotype:	Ig Fraction
Purification:	This antibody is purified through a protein A column, followed by peptide affinity purification.

Target Details

Target:	GM2A
Alternative Name:	GM2A (GM2A Products)
Molecular Weight:	21 kDa
Gene ID:	2760

Target Details

UniProt: [P17900](#)

Application Details

Application Notes: For WB starting dilution is: 1:1000

Restrictions: For Research Use only

Handling

Format: Liquid

Concentration: 0.5 mg/mL

Buffer: Supplied in PBS with 0.09 % (W/V) sodium azide.

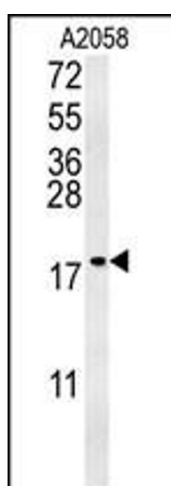
Preservative: Sodium azide

Precaution of Use: This product contains Sodium azide: a POISONOUS AND HAZARDOUS SUBSTANCE which should be handled by trained staff only.

Storage: 4 °C, -20 °C

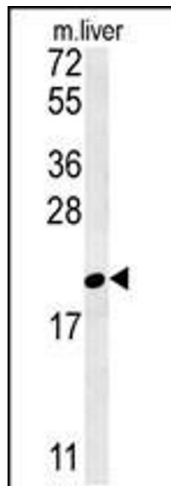
Storage Comment: Store at 4°C for three months and -20°C, stable for up to one year. As with all antibodies care should be taken to avoid repeated freeze thaw cycles. Antibodies should not be exposed to prolonged high temperatures.

Images



Western Blotting

Image 1. Western blot analysis in A2058 cell line lysates (35ug/lane).



Western Blotting

Image 2. Western blot analysis in mouse liver tissue lysates (35ug/lane).