



Datasheet for ABIN5536659  
**anti-MAGT1 antibody (N-Term)**



[Go to Product page](#)

2 Images

Overview

Quantity:	400 µL
Target:	MAGT1
Binding Specificity:	AA 44-71, N-Term
Reactivity:	Human, Mouse
Host:	Rabbit
Clonality:	Polyclonal
Conjugate:	This MAGT1 antibody is un-conjugated
Application:	Western Blotting (WB), Flow Cytometry (FACS)

Product Details

Immunogen:	This MAGT1 antibody is generated from rabbits immunized with a KLH conjugated synthetic peptide between 44-71 amino acids from the N-terminal region of human MAGT1.
Isotype:	Ig Fraction
Purification:	This antibody is purified through a protein A column, followed by peptide affinity purification.

Target Details

Target:	MAGT1
Alternative Name:	MAGT1 ( <a href="#">MAGT1 Products</a> )
Background:	MAGT1 encodes a magnesium cation transporter protein that localizes to the cell membrane. This protein also associates with N-oligosaccharyl transferase and therefore may have a role in N-glycosylation. Mutations in this gene cause mental retardation X-linked type 95 (MRX95).

## Target Details

---

This gene may have multiple in-frame translation initiation sites, one of which would encode a shorter protein with an N-terminus containing a signal peptide at amino acids 1-29.

Molecular Weight: 38 kDa

Gene ID: 84061

UniProt: [Q9H0U3](#)

Pathways: [Cell RedoxHomeostasis](#)

## Application Details

---

Application Notes: For WB starting dilution is: 1:1000

For FACS starting dilution is: 1:10~50

Restrictions: For Research Use only

## Handling

---

Format: Liquid

Concentration: 0.5 mg/mL

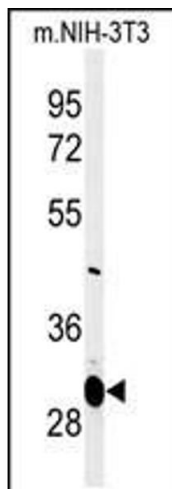
Buffer: Supplied in PBS with 0.09 % (W/V) sodium azide.

Preservative: Sodium azide

Precaution of Use: This product contains Sodium azide: a POISONOUS AND HAZARDOUS SUBSTANCE which should be handled by trained staff only.

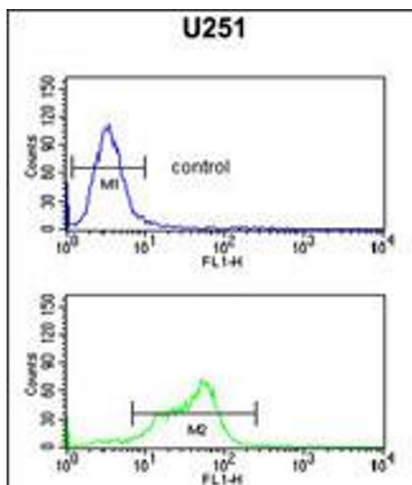
Storage: 4 °C,-20 °C

Storage Comment: Store at 4°C for three months and -20°C, stable for up to one year. As with all antibodies care should be taken to avoid repeated freeze thaw cycles. Antibodies should not be exposed to prolonged high temperatures.



### Western Blotting

**Image 1.** Western blot analysis of MAGT1 Antibody in mouse NIH-3T3 cell line lysates (35ug/lane)



### Flow Cytometry

**Image 2.** Flow cytometric analysis of U251 cells (bottom histogram) compared to a negative control (top histogram). FITC-conjugated goat-anti-rabbit secondary antibodies were used for the analysis.