

Datasheet for ABIN5536727
anti-CLUL1 antibody (C-Term)[Go to Product page](#)

1 Image

Overview

Quantity:	400 µL
Target:	CLUL1
Binding Specificity:	AA 439-465, C-Term
Reactivity:	Human
Host:	Rabbit
Clonality:	Polyclonal
Conjugate:	This CLUL1 antibody is un-conjugated
Application:	Western Blotting (WB)

Product Details

Immunogen:	This CLUL1 antibody is generated from rabbits immunized with a KLH conjugated synthetic peptide between 439-465 amino acids from the C-terminal region of human CLUL1.
Isotype:	Ig Fraction
Purification:	This antibody is purified through a protein A column, followed by peptide affinity purification.

Target Details

Target:	CLUL1
Alternative Name:	CLUL1 (CLUL1 Products)
Background:	CLUL1 is a retina-specific clusterin-like protein which shows nearly 25 % identity to clusterin at the protein level. It is expressed specifically in cone photoreceptor cells.

Target Details

Molecular Weight:	54 kDa
Gene ID:	27098
UniProt:	Q15846

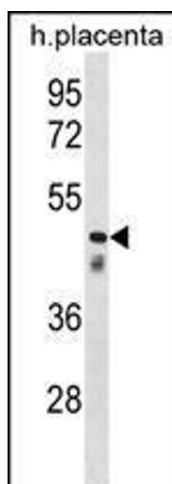
Application Details

Application Notes:	For WB starting dilution is: 1:1000
Restrictions:	For Research Use only

Handling

Format:	Liquid
Concentration:	0.4 mg/mL
Buffer:	Supplied in PBS with 0.09 % (W/V) sodium azide.
Preservative:	Sodium azide
Precaution of Use:	This product contains Sodium azide: a POISONOUS AND HAZARDOUS SUBSTANCE which should be handled by trained staff only.
Storage:	4 °C, -20 °C
Storage Comment:	Store at 4°C for three months and -20°C, stable for up to one year. As with all antibodies care should be taken to avoid repeated freeze thaw cycles. Antibodies should not be exposed to prolonged high temperatures.

Images



Western Blotting

Image 1. Western blot analysis in human placenta tissue lysates (35ug/lane).