



Datasheet for ABIN5536736
anti-KDEL1 antibody (C-Term)



[Go to Product page](#)

1 Image

Overview

Quantity:	400 µL
Target:	KDEL1
Binding Specificity:	AA 185-211, C-Term
Reactivity:	Human
Host:	Rabbit
Clonality:	Polyclonal
Conjugate:	This KDEL1 antibody is un-conjugated
Application:	Western Blotting (WB)

Product Details

Immunogen:	This KDEL1 antibody is generated from rabbits immunized with a KLH conjugated synthetic peptide between 185-211 amino acids from the C-terminal region of human KDEL1.
Isotype:	Ig Fraction
Purification:	This antibody is purified through a protein A column, followed by peptide affinity purification.

Target Details

Target:	KDEL1
Alternative Name:	KDEL1 (KDEL1 Products)
Background:	Retention of resident soluble proteins in the lumen of the endoplasmic reticulum (ER) is achieved in both yeast and animal cells by their continual retrieval from the cis-Golgi, or a pre-Golgi compartment. Sorting of these proteins is dependent on a C-terminal tetrapeptide signal,

Target Details

usually lys-asp-glu-leu (KDEL) in animal cells, and his-asp-glu-leu (HDEL) in *S. cerevisiae*. This process is mediated by a receptor that recognizes, and binds the tetrapeptide-containing protein, and returns it to the ER. In yeast, the sorting receptor encoded by a single gene, ERD2, which is a seven-transmembrane protein. Unlike yeast, several human homologs of the ERD2 gene, constituting the KDEL receptor gene family, have been described. The protein encoded by this gene was the first member of the family to be identified, and it encodes a protein structurally and functionally similar to the yeast ERD2 gene product.

Molecular Weight: 25 kDa

Gene ID: 10945

UniProt: [P24390](#)

Pathways: [Maintenance of Protein Location](#)

Application Details

Application Notes: For WB starting dilution is: 1:2000

Restrictions: For Research Use only

Handling

Format: Liquid

Concentration: 0.47 mg/mL

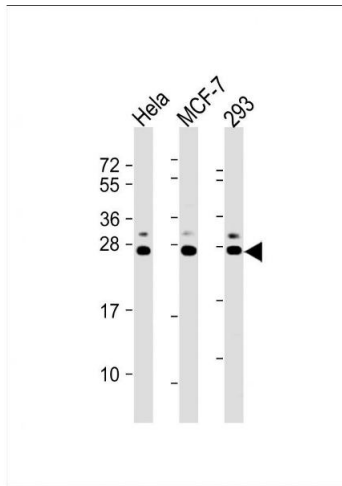
Buffer: Supplied in PBS with 0.09 % (W/V) sodium azide.

Preservative: Sodium azide

Precaution of Use: This product contains Sodium azide: a POISONOUS AND HAZARDOUS SUBSTANCE which should be handled by trained staff only.

Storage: 4 °C,-20 °C

Storage Comment: Store at 4°C for three months and -20°C, stable for up to one year. As with all antibodies care should be taken to avoid repeated freeze thaw cycles. Antibodies should not be exposed to prolonged high temperatures.



Western Blotting

Image 1. Western Blot at 1:2000 dilution Lane 1: HeLa whole cell lysate Lane 2: MCF-7 whole cell lysate Lane 3: 293 whole cell lysate Lysates/proteins at 20 ug per lane.