

Datasheet for ABIN5536763
anti-FHOD1 antibody (C-Term)



[Go to Product page](#)

1 Image

Overview

Quantity:	400 µL
Target:	FHOD1
Binding Specificity:	AA 985-1013, C-Term
Reactivity:	Human, Mouse
Host:	Rabbit
Clonality:	Polyclonal
Conjugate:	This FHOD1 antibody is un-conjugated
Application:	Western Blotting (WB)

Product Details

Immunogen:	This FHOD1 antibody is generated from rabbits immunized with a KLH conjugated synthetic peptide between 985-1013 amino acids from the C-terminal region of human FHOD1.
Isotype:	Ig Fraction
Purification:	This antibody is purified through a protein A column, followed by peptide affinity purification.

Target Details

Target:	FHOD1
Alternative Name:	FHOD1 (FHOD1 Products)
Background:	<p>This gene encodes a protein which is a member of the formin/diaphanous family of proteins. The gene is ubiquitously expressed but is found in abundance in the spleen. The encoded protein has sequence homology to diaphanous and formin proteins within the Formin</p>

Target Details

Homology (FH)1 and FH2 domains. It also contains a coiled-coil domain, a collagen-like domain, two nuclear localization signals, and several potential PKC and PKA phosphorylation sites. It is a predominantly cytoplasmic protein and is expressed in a variety of human cell lines. [provided by RefSeq].

Molecular Weight: 127 kDa

Gene ID: 29109

UniProt: [Q9Y613](#)

Application Details

Application Notes: For WB starting dilution is: 1:1000

Restrictions: For Research Use only

Handling

Format: Liquid

Concentration: 0.5 mg/mL

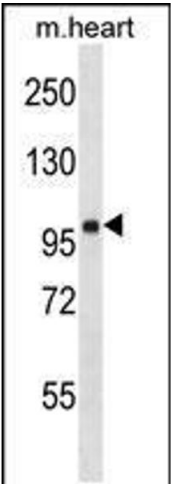
Buffer: Supplied in PBS with 0.09 % (W/V) sodium azide.

Preservative: Sodium azide

Precaution of Use: This product contains Sodium azide: a POISONOUS AND HAZARDOUS SUBSTANCE which should be handled by trained staff only.

Storage: 4 °C,-20 °C

Storage Comment: Store at 4°C for three months and -20°C, stable for up to one year. As with all antibodies care should be taken to avoid repeated freeze thaw cycles. Antibodies should not be exposed to prolonged high temperatures.



Western Blotting

Image 1. Western blot analysis in mouse heart tissue lysates (35ug/lane).