

Datasheet for ABIN5536785  
**anti-KRBA2 antibody (AA 157-186)**[Go to Product page](#)

## 2 Images

## Overview

Quantity:	400 µL
Target:	KRBA2
Binding Specificity:	AA 157-186
Reactivity:	Human
Host:	Rabbit
Clonality:	Polyclonal
Conjugate:	This KRBA2 antibody is un-conjugated
Application:	Western Blotting (WB), Immunofluorescence (IF), Immunohistochemistry (Paraffin-embedded Sections) (IHC (p))

## Product Details

Immunogen:	This KRBA2 antibody is generated from rabbits immunized with a KLH conjugated synthetic peptide between 157-186 amino acids from the Central region of human KRBA2.
Isotype:	Ig Fraction
Purification:	This antibody is purified through a protein A column, followed by peptide affinity purification.

## Target Details

Target:	KRBA2
Alternative Name:	KRBA2 ( <a href="#">KRBA2 Products</a> )
Molecular Weight:	56 kDa

## Target Details

Gene ID: 124751

UniProt: [Q6ZNG9](#)

## Application Details

Application Notes: For IF starting dilution is: 1:25

For WB starting dilution is: 1:1000

Restrictions: For Research Use only

## Handling

Format: Liquid

Concentration: 0.5 mg/mL

Buffer: Supplied in PBS with 0.09 % (W/V) sodium azide.

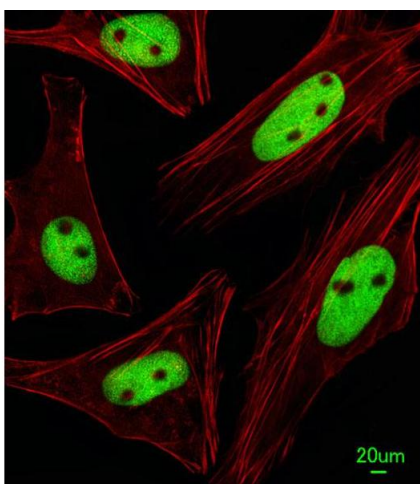
Preservative: Sodium azide

Precaution of Use: This product contains Sodium azide: a POISONOUS AND HAZARDOUS SUBSTANCE which should be handled by trained staff only.

Storage: 4 °C, -20 °C

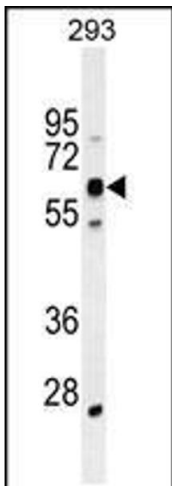
Storage Comment: Store at 4°C for three months and -20°C, stable for up to one year. As with all antibodies care should be taken to avoid repeated freeze thaw cycles. Antibodies should not be exposed to prolonged high temperatures.

## Images



### Immunofluorescence

**Image 1.** Immunofluorescent analysis of HeLa cells, using KRBA2 Antibody . Antibody was diluted at 1:25 dilution. Alexa Fluor 488-conjugated goat anti-rabbit IgG at 1:400 dilution was used as the secondary antibody (green). Cytoplasmic actin was counterstained with Dylight Fluor 554 (red) conjugated Phalloidin (red).



Western Blotting

**Image 2.** Western blot analysis in 293 cell line lysates (35ug/lane). This demonstrates the KCat detected the KCat.