

Datasheet for ABIN5536845  
**anti-LATS2 antibody (AA 228-258)**[Go to Product page](#)

## 2 Images

## Overview

Quantity:	400 µL
Target:	LATS2
Binding Specificity:	AA 228-258
Reactivity:	Human, Mouse
Host:	Rabbit
Clonality:	Polyclonal
Conjugate:	This LATS2 antibody is un-conjugated
Application:	Western Blotting (WB), Immunohistochemistry (Paraffin-embedded Sections) (IHC (p))

## Product Details

Immunogen:	This LATS2 antibody is generated from rabbits immunized with a KLH conjugated synthetic peptide between 228-258 amino acids from the Central region of human LATS2.
Isotype:	Ig Fraction
Purification:	This antibody is prepared by Saturated Ammonium Sulfate (SAS) precipitation followed by dialysis

## Target Details

Target:	LATS2
Alternative Name:	LATS2 ( <a href="#">LATS2 Products</a> )
Background:	LATS2 is a serine/threonine protein kinase belonging to the LATS tumor suppressor family. This protein localizes to centrosomes during interphase, and early and late metaphase. It

## Target Details

interacts with the centrosomal proteins aurora-A and ajuba and is required for accumulation of gamma-tubulin and spindle formation at the onset of mitosis. It also interacts with a negative regulator of p53 and may function in a positive feedback loop with p53 that responds to cytoskeleton damage. Additionally, it can function as a co-repressor of androgen-responsive gene expression.

Molecular Weight: 120 kDa

Gene ID: 26524

UniProt: [Q9NRM7](#)

## Application Details

Application Notes: For WB starting dilution is: 1:1000

For IHC-P starting dilution is: 1:10~50

Restrictions: For Research Use only

## Handling

Format: Liquid

Concentration: 2 mg/mL

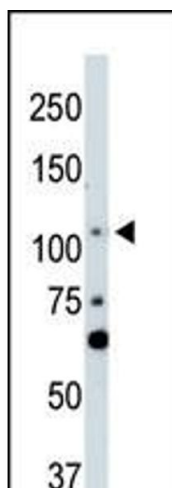
Buffer: Supplied in PBS with 0.09 % (W/V) sodium azide.

Preservative: Sodium azide

Precaution of Use: This product contains Sodium azide: a POISONOUS AND HAZARDOUS SUBSTANCE which should be handled by trained staff only.

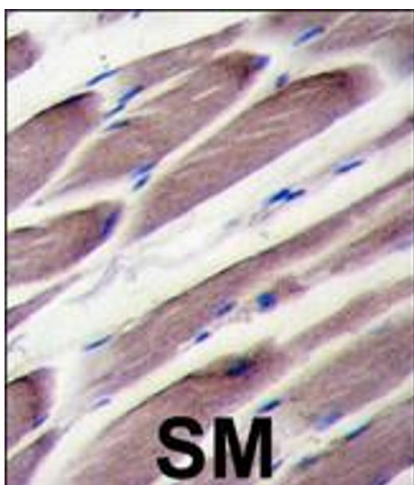
Storage: 4 °C, -20 °C

Storage Comment: Store at 4°C for three months and -20°C, stable for up to one year. As with all antibodies care should be taken to avoid repeated freeze thaw cycles. Antibodies should not be exposed to prolonged high temperatures.



#### Western Blotting

**Image 1.** Antibody is used in Western blot to detect LATS2 in NIH-3T3 cell lysate.



#### Immunohistochemistry

**Image 2.** Formalin-fixed and paraffin-embedded human skeletal muscle tissue reacted with LATS2 antibody, which was peroxidase-conjugated to the secondary antibody, followed by DAB staining.