

Datasheet for ABIN5536870
anti-ERMP1 antibody (C-Term)[Go to Product page](#)

1 Image

Overview

Quantity:	400 µL
Target:	ERMP1
Binding Specificity:	AA 856-885, C-Term
Reactivity:	Human
Host:	Rabbit
Clonality:	Polyclonal
Conjugate:	This ERMP1 antibody is un-conjugated
Application:	Western Blotting (WB)

Product Details

Immunogen:	This ERMP1 antibody is generated from rabbits immunized with a KLH conjugated synthetic peptide between 856-885 amino acids from the C-terminal region of human ERMP1.
Isotype:	Ig Fraction
Purification:	This antibody is purified through a protein A column, followed by peptide affinity purification.

Target Details

Target:	ERMP1
Alternative Name:	ERMP1 (ERMP1 Products)
Background:	Within the ovary, required for the organization of somatic cells and oocytes into discrete follicular structures (By similarity).

Target Details

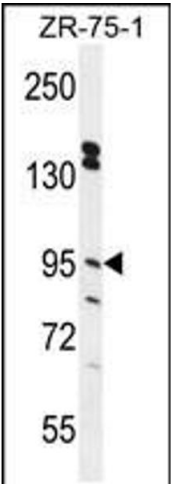
Molecular Weight:	100 kDa
Gene ID:	79956
UniProt:	Q7Z2K6
Pathways:	SARS-CoV-2 Protein Interactome

Application Details

Application Notes:	For WB starting dilution is: 1:1000
Restrictions:	For Research Use only

Handling

Format:	Liquid
Concentration:	0.5 mg/mL
Buffer:	Supplied in PBS with 0.09 % (W/V) sodium azide.
Preservative:	Sodium azide
Precaution of Use:	This product contains Sodium azide: a POISONOUS AND HAZARDOUS SUBSTANCE which should be handled by trained staff only.
Storage:	4 °C,-20 °C
Storage Comment:	Store at 4°C for three months and -20°C, stable for up to one year. As with all antibodies care should be taken to avoid repeated freeze thaw cycles. Antibodies should not be exposed to prolonged high temperatures.



Western Blotting

Image 1. Western blot analysis in ZR-75-1 cell line lysates (35ug/lane).