

Datasheet for ABIN5536892
anti-DEFB112 antibody (N-Term)[Go to Product page](#)

2 Images

Overview

Quantity:	400 µL
Target:	DEFB112
Binding Specificity:	AA 15-43, N-Term
Reactivity:	Human
Host:	Rabbit
Clonality:	Polyclonal
Conjugate:	This DEFB112 antibody is un-conjugated
Application:	Western Blotting (WB), Flow Cytometry (FACS)

Product Details

Immunogen:	This DEFB112 antibody is generated from rabbits immunized with a KLH conjugated synthetic peptide between 15-43 amino acids from the N-terminal region of human DEFB112.
Isotype:	Ig Fraction
Purification:	This antibody is purified through a protein A column, followed by peptide affinity purification.

Target Details

Target:	DEFB112
Alternative Name:	DEFB112 (DEFB112 Products)
Background:	DEFB112 has antibacterial activity (By similarity).
Molecular Weight:	13 kDa

Target Details

Gene ID:	245915
UniProt:	Q30KQ8

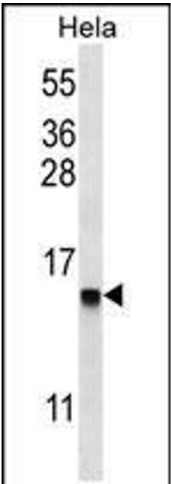
Application Details

Application Notes:	For WB starting dilution is: 1:1000
	For FACS starting dilution is: 1:10~50
Restrictions:	For Research Use only

Handling

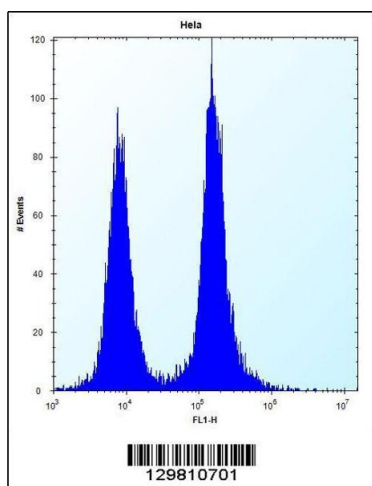
Format:	Liquid
Concentration:	0.3 mg/mL
Buffer:	Supplied in PBS with 0.09 % (W/V) sodium azide.
Preservative:	Sodium azide
Precaution of Use:	This product contains Sodium azide: a POISONOUS AND HAZARDOUS SUBSTANCE which should be handled by trained staff only.
Storage:	4 °C,-20 °C
Storage Comment:	Store at 4°C for three months and -20°C, stable for up to one year. As with all antibodies care should be taken to avoid repeated freeze thaw cycles. Antibodies should not be exposed to prolonged high temperatures.

Images



Western Blotting

Image 1. Western blot analysis in HeLa cell line lysates (35ug/lane).



Flow Cytometry

Image 2. Flow cytometric analysis of HeLa cells (right histogram) compared to a negative control cell (left histogram). FITC-conjugated donkey-anti-rabbit secondary antibodies were used for the analysis.