

Datasheet for ABIN5536950
anti-C1RL antibody (AA 161-190)[Go to Product page](#)

1 Image

Overview

| | |
|----------------------|-------------------------------------|
| Quantity: | 400 µL |
| Target: | C1RL |
| Binding Specificity: | AA 161-190 |
| Reactivity: | Human |
| Host: | Rabbit |
| Clonality: | Polyclonal |
| Conjugate: | This C1RL antibody is un-conjugated |
| Application: | Western Blotting (WB) |

Product Details

| | |
|---------------|-------------------------------------------------------------------------------------------------------------------------------------------------------------------|
| Immunogen: | This C1RL antibody is generated from rabbits immunized with a KLH conjugated synthetic peptide between 161-190 amino acids from the Central region of human C1RL. |
| Isotype: | Ig Fraction |
| Purification: | This antibody is purified through a protein A column, followed by peptide affinity purification. |

Target Details

| | |
|-------------------|----------------------------------------------------------------------------------------|
| Target: | C1RL |
| Alternative Name: | C1RL (C1RL Products) |
| Background: | C1RL mediates the proteolytic cleavage of HP/haptoglobin in the endoplasmic reticulum. |
| Molecular Weight: | 53 kDa |

Target Details

Gene ID: 51279

UniProt: [Q9NZP8](#)

Application Details

Application Notes: For WB starting dilution is: 1:1000

Restrictions: For Research Use only

Handling

Format: Liquid

Concentration: 0.3 mg/mL

Buffer: Supplied in PBS with 0.09 % (W/V) sodium azide.

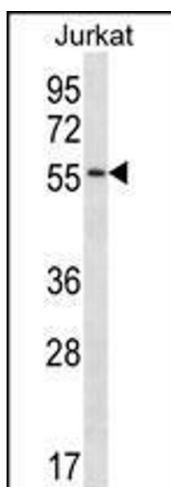
Preservative: Sodium azide

Precaution of Use: This product contains Sodium azide: a POISONOUS AND HAZARDOUS SUBSTANCE which should be handled by trained staff only.

Storage: 4 °C,-20 °C

Storage Comment: Store at 4°C for three months and -20°C, stable for up to one year. As with all antibodies care should be taken to avoid repeated freeze thaw cycles. Antibodies should not be exposed to prolonged high temperatures.

Images



Western Blotting

Image 1. Western blot analysis in Jurkat cell line lysates (35ug/lane).