

Datasheet for ABIN5536951
anti-CAPG antibody (AA 181-209)



[Go to Product page](#)

1 Image

Overview

Quantity:	400 µL
Target:	CAPG
Binding Specificity:	AA 181-209
Reactivity:	Human
Host:	Rabbit
Clonality:	Polyclonal
Conjugate:	This CAPG antibody is un-conjugated
Application:	Western Blotting (WB)

Product Details

Immunogen:	This CAPG antibody is generated from rabbits immunized with a KLH conjugated synthetic peptide between 181-209 amino acids from the Central region of human CAPG.
Isotype:	Ig Fraction
Purification:	This antibody is purified through a protein A column, followed by peptide affinity purification.

Target Details

Target:	CAPG
Alternative Name:	CAPG (CAPG Products)
Background:	This gene encodes a member of the gelsolin/villin family of actin-regulatory proteins. The encoded protein reversibly blocks the barbed ends of F-actin filaments in a Ca ²⁺ and phosphoinositide-regulated manner, but does not sever preformed actin filaments. By capping

Target Details

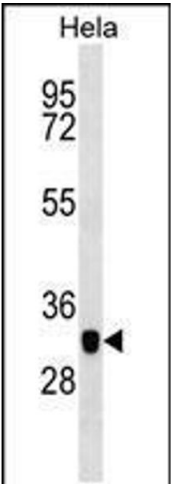
	the barbed ends of actin filaments, the encoded protein contributes to the control of actin-based motility in non-muscle cells. Alternatively spliced transcript variants have been observed, but have not been fully described. [provided by RefSeq].
Molecular Weight:	38 kDa
Gene ID:	822
UniProt:	P40121
Pathways:	Regulation of Actin Filament Polymerization

Application Details

Application Notes:	For WB starting dilution is: 1:1000
Restrictions:	For Research Use only

Handling

Format:	Liquid
Concentration:	0.45 mg/mL
Buffer:	Supplied in PBS with 0.09 % (W/V) sodium azide.
Preservative:	Sodium azide
Precaution of Use:	This product contains Sodium azide: a POISONOUS AND HAZARDOUS SUBSTANCE which should be handled by trained staff only.
Storage:	4 °C,-20 °C
Storage Comment:	Store at 4°C for three months and -20°C, stable for up to one year. As with all antibodies care should be taken to avoid repeated freeze thaw cycles. Antibodies should not be exposed to prolonged high temperatures.



Western Blotting

Image 1. Western blot analysis in Hela cell line lysates (35ug/lane).