

Datasheet for ABIN5537000 anti-EPH Receptor B4 antibody (AA 360-389)

[Go to Product page](#)

2 Images

Overview

Quantity:	400 µL
Target:	EPH Receptor B4 (EPHB4)
Binding Specificity:	AA 360-389
Reactivity:	Mouse
Host:	Rabbit
Clonality:	Polyclonal
Application:	Western Blotting (WB)

Product Details

Immunogen:	This Mouse Ephb4 antibody is generated from rabbits immunized with a KLH conjugated synthetic peptide between 360-389 amino acids from the Central region of mouse Ephb4.
Isotype:	Ig Fraction
Purification:	This antibody is purified through a protein A column, followed by peptide affinity purification.

Target Details

Target:	EPH Receptor B4 (EPHB4)
Alternative Name:	Ephb4 (EPHB4 Products)
Background:	Receptor for members of the ephrin-B family. Binds to ephrin-B2.
Molecular Weight:	109 kDa
Gene ID:	13846

Target Details

UniProt: [P54761](#)

Pathways: [RTK Signaling](#)

Application Details

Application Notes: For WB starting dilution is: 1:1000

Restrictions: For Research Use only

Handling

Format: Liquid

Concentration: 0.5 mg/mL

Buffer: Supplied in PBS with 0.09 % (W/V) sodium azide.

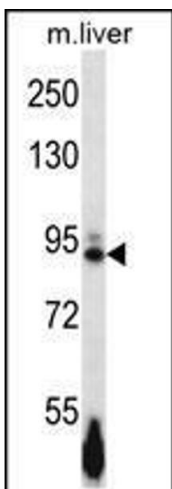
Preservative: Sodium azide

Precaution of Use: This product contains Sodium azide: a POISONOUS AND HAZARDOUS SUBSTANCE which should be handled by trained staff only.

Storage: 4 °C,-20 °C

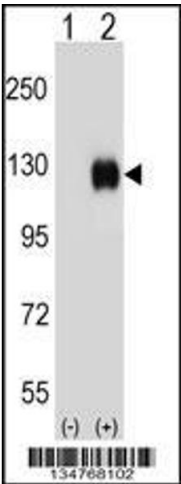
Storage Comment: Store at 4°C for three months and -20°C, stable for up to one year. As with all antibodies care should be taken to avoid repeated freeze thaw cycles. Antibodies should not be exposed to prolonged high temperatures.

Images



Western Blotting

Image 1. Western blot analysis in mouse liver tissue lysates (35ug/lane).



Western Blotting

Image 2. Western blot analysis of Ephb4 using rabbit polyclonal Mouse Ephb4 Antibody using 293 cell lysates (2 ug/lane) either nontransfected (Lane 1) or transiently transfected (Lane 2) with the Ephb4 gene.