

Datasheet for ABIN5537074
anti-MAP3K10 antibody (N-Term)

2 Images

[Go to Product page](#)

Overview

Quantity:	400 µL
Target:	MAP3K10
Binding Specificity:	AA 110-138, N-Term
Reactivity:	Human, Mouse
Host:	Rabbit
Clonality:	Polyclonal
Conjugate:	This MAP3K10 antibody is un-conjugated
Application:	Western Blotting (WB), Immunohistochemistry (Paraffin-embedded Sections) (IHC (p))

Product Details

Immunogen:	This Mouse Map3k10 antibody is generated from rabbits immunized with a KLH conjugated synthetic peptide between 110-138 amino acids from the N-terminal region of mouse Map3k10.
Isotype:	Ig Fraction
Purification:	This antibody is purified through a protein A column, followed by peptide affinity purification.

Target Details

Target:	MAP3K10
Alternative Name:	Map3k10 (MAP3K10 Products)
Background:	Map3k10 activates the JUN N-terminal pathway (By similarity).

Target Details

Molecular Weight: 103 kDa

Gene ID: 269881

UniProt: [Q66L42](#)

Application Details

Application Notes: For WB starting dilution is: 1:1000

For IHC-P starting dilution is: 1:10~50

Restrictions: For Research Use only

Handling

Format: Liquid

Concentration: 0.5 mg/mL

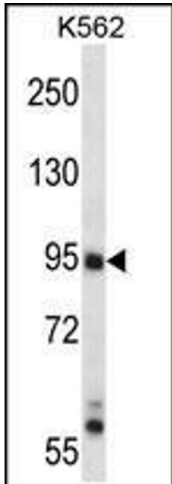
Buffer: Supplied in PBS with 0.09 % (W/V) sodium azide.

Preservative: Sodium azide

Precaution of Use: This product contains Sodium azide: a POISONOUS AND HAZARDOUS SUBSTANCE which should be handled by trained staff only.

Storage: 4 °C, -20 °C

Storage Comment: Store at 4°C for three months and -20°C, stable for up to one year. As with all antibodies care should be taken to avoid repeated freeze thaw cycles. Antibodies should not be exposed to prolonged high temperatures.



Western Blotting

Image 1. Western blot analysis in K562 cell line lysates (35ug/lane).



Immunohistochemistry

Image 2. Mouse Map3k10 Antibody immunohistochemistry analysis in formalin fixed and paraffin embedded mouse skeletal muscle followed by peroxidase conjugation of the secondary antibody and DAB staining.