

Datasheet for ABIN5537079  
**anti-MASTL antibody (AA 561-589)**



[Go to Product page](#)

1 Image

## Overview

Quantity:	400 µL
Target:	MASTL
Binding Specificity:	AA 561-589
Reactivity:	Mouse
Host:	Rabbit
Clonality:	Polyclonal
Conjugate:	This MASTL antibody is un-conjugated
Application:	Western Blotting (WB)

## Product Details

Immunogen:	This Mouse Mastl antibody is generated from rabbits immunized with a KLH conjugated synthetic peptide between 561-589 amino acids from the Central region of mouse Mastl.
Isotype:	Ig Fraction
Purification:	This antibody is purified through a protein A column, followed by peptide affinity purification.

## Target Details

Target:	MASTL
Alternative Name:	Mastl ( <a href="#">MASTL Products</a> )
Background:	Serine/threonine kinase. Mediates mitotic entry and maintenance. Maintains the correct equilibrium between cyclin B1-CDK1 and protein phosphatase 2A (PP2A) by promoting the inactivation of PP2A. Phosphorylates histone protein in vitro. May be involved in megakaryocyte

## Target Details

differentiation (By similarity).

Molecular Weight: 96 kDa

Gene ID: 67121

UniProt: [Q8C0P0](#)

## Application Details

Application Notes: For WB starting dilution is: 1:1000

Restrictions: For Research Use only

## Handling

Format: Liquid

Concentration: 0.5 mg/mL

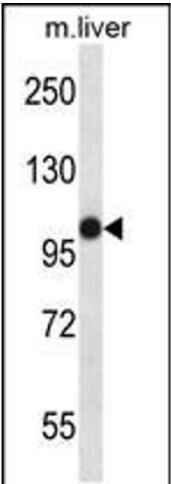
Buffer: Supplied in PBS with 0.09 % (W/V) sodium azide.

Preservative: Sodium azide

Precaution of Use: This product contains Sodium azide: a POISONOUS AND HAZARDOUS SUBSTANCE which should be handled by trained staff only.

Storage: 4 °C,-20 °C

Storage Comment: Store at 4°C for three months and -20°C, stable for up to one year. As with all antibodies care should be taken to avoid repeated freeze thaw cycles. Antibodies should not be exposed to prolonged high temperatures.



Western Blotting

**Image 1.** Western blot analysis in mouse liver tissue lysates (35ug/lane).