



[Go to Product page](#)

Datasheet for ABIN5537083
anti-MBL2 antibody (C-Term)

3 Images

Overview

Quantity:	400 µL
Target:	MBL2
Binding Specificity:	AA 173-202, C-Term
Reactivity:	Human
Host:	Rabbit
Clonality:	Polyclonal
Conjugate:	This MBL2 antibody is un-conjugated
Application:	Western Blotting (WB), Immunofluorescence (IF), Immunohistochemistry (Paraffin-embedded Sections) (IHC (p))

Product Details

Immunogen:	This MBL2 antibody is generated from rabbits immunized with a KLH conjugated synthetic peptide between 173-202 amino acids from the C-terminal region of human MBL2.
Isotype:	Ig Fraction
Purification:	This antibody is purified through a protein A column, followed by peptide affinity purification.

Target Details

Target:	MBL2
Alternative Name:	MBL2 (MBL2 Products)
Background:	This gene encodes the soluble mannose-binding lectin or mannose-binding protein found in serum. The protein encoded belongs to the collectin family and is an important element in the

Target Details

innate immune system. The protein recognizes mannose and N-acetylglucosamine on many microorganisms, and is capable of activating the classical complement pathway. Deficiencies of this gene have been associated with susceptibility to autoimmune and infectious diseases.

Molecular Weight: 26 kDa

Gene ID: 4153

UniProt: [P11226](#)

Pathways: [Complement System](#), [Positive Regulation of Immune Effector Process](#)

Application Details

Application Notes: For WB starting dilution is: 1:1000

For IF starting dilution is: 1:10~50

For IHC-P starting dilution is: 1:10~50

Restrictions: For Research Use only

Handling

Format: Liquid

Concentration: 0.46 mg/mL

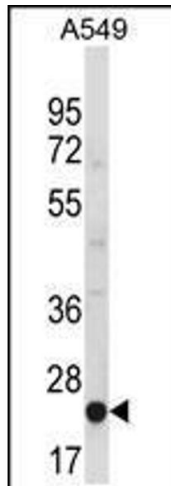
Buffer: Supplied in PBS with 0.09 % (W/V) sodium azide.

Preservative: Sodium azide

Precaution of Use: This product contains Sodium azide: a POISONOUS AND HAZARDOUS SUBSTANCE which should be handled by trained staff only.

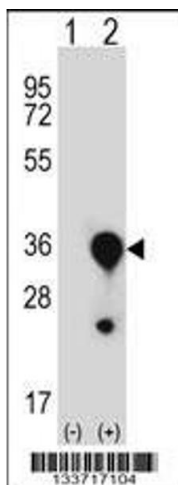
Storage: 4 °C,-20 °C

Storage Comment: Store at 4°C for three months and -20°C, stable for up to one year. As with all antibodies care should be taken to avoid repeated freeze thaw cycles. Antibodies should not be exposed to prolonged high temperatures.



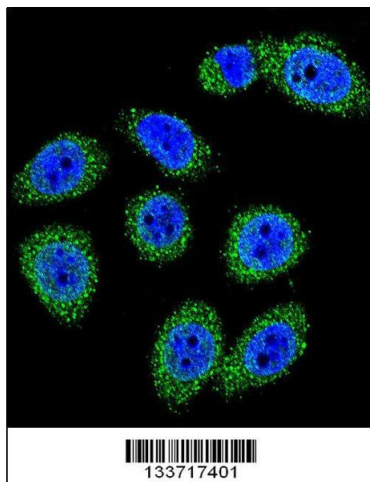
Western Blotting

Image 1. Western blot analysis in A549 cell line lysates (35ug/lane).



Western Blotting

Image 2. Western blot analysis of MBL2 using rabbit polyclonal MBL2 Antibody using 293 cell lysates (2 ug/lane) either nontransfected (Lane 1) or transiently transfected (Lane 2) with the MBL2 gene.



Immunofluorescence

Image 3. Confocal immunofluorescent analysis of MBL2 Antibody with A549 cell followed by Alexa Fluor 488-conjugated goat anti-rabbit IgG (green). DAPI was used to stain the cell nuclear (blue).