

Datasheet for ABIN5537178  
**anti-Midkine antibody (C-Term)**

## 3 Images

[Go to Product page](#)

## Overview

Quantity:	400 µL
Target:	Midkine (MDK)
Binding Specificity:	AA 113-143, C-Term
Reactivity:	Human, Mouse
Host:	Rabbit
Clonality:	Polyclonal
Conjugate:	This Midkine antibody is un-conjugated
Application:	Western Blotting (WB), Immunofluorescence (IF), Immunohistochemistry (Paraffin-embedded Sections) (IHC (p))

## Product Details

Immunogen:	This MDK antibody is generated from rabbits immunized with a KLH conjugated synthetic peptide between 113-143 amino acids from the C-terminal region of human MDK.
Isotype:	Ig Fraction
Purification:	This antibody is prepared by Saturated Ammonium Sulfate (SAS) precipitation followed by dialysis

## Target Details

Target:	Midkine (MDK)
Alternative Name:	MDK ( <a href="#">MDK Products</a> )
Background:	Midkine is a retinoic acid-responsive, heparin-binding growth factor expressed in various cell

## Target Details

types during embryogenesis. It promotes angiogenesis, cell growth, and cell migration. Midkine is also expressed in several carcinomas, suggesting that it may play a role in tumorigenesis, perhaps through its effects on angiogenesis (summary by Reynolds et al., 2004 [PubMed 15197188]).

Molecular Weight: 16 kDa

Gene ID: 4192

UniProt: [P21741](#)

Pathways: [RTK Signaling](#), [M Phase](#), [Skeletal Muscle Fiber Development](#)

## Application Details

Application Notes: For WB starting dilution is: 1:1000

For IHC-P starting dilution is: 1:10~50

For IF starting dilution is: 1:10~50

Restrictions: For Research Use only

## Handling

Format: Liquid

Concentration: 2 mg/mL

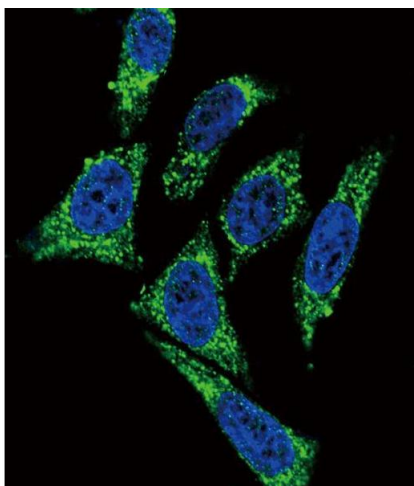
Buffer: Supplied in PBS with 0.09 % (W/V) sodium azide.

Preservative: Sodium azide

Precaution of Use: This product contains Sodium azide: a POISONOUS AND HAZARDOUS SUBSTANCE which should be handled by trained staff only.

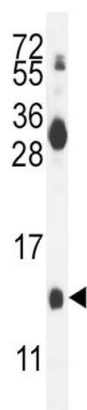
Storage: 4 °C, -20 °C

Storage Comment: Store at 4°C for three months and -20°C, stable for up to one year. As with all antibodies care should be taken to avoid repeated freeze thaw cycles. Antibodies should not be exposed to prolonged high temperatures.



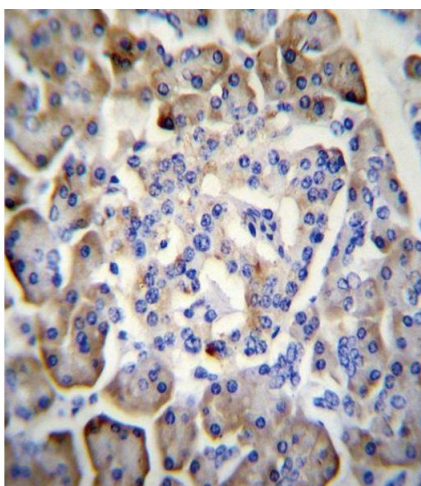
### Immunofluorescence

**Image 1.** Confocal immunofluorescent analysis of MDK Antibody with HeLa cells followed by Alexa Fluor488-conjugated goat anti-rabbit IgG (green). DAPI was used to stain the cell nuclei (blue).



### Western Blotting

**Image 2.** Western blot analysis in mouse kidney tissue lysates (35ug/lane).



### Immunohistochemistry

**Image 3.** MDK Antibody immunohistochemistry analysis in formalin fixed and paraffin embedded human pancreas tissue followed by peroxidase conjugation of the secondary antibody and DAB staining.