

Datasheet for ABIN5537203  
**anti-NEK9 antibody (AA 503-530)**[Go to Product page](#)

## 2 Images

## Overview

Quantity:	400 µL
Target:	NEK9
Binding Specificity:	AA 503-530
Reactivity:	Human, Mouse
Host:	Rabbit
Clonality:	Polyclonal
Conjugate:	This NEK9 antibody is un-conjugated
Application:	Western Blotting (WB)

## Product Details

Immunogen:	This Mouse Nek9 antibody is generated from rabbits immunized with a KLH conjugated synthetic peptide between 503-530 amino acids from the Central region of mouse Nek9.
Isotype:	Ig Fraction
Purification:	This antibody is purified through a protein A column, followed by peptide affinity purification.

## Target Details

Target:	NEK9
Alternative Name:	Nek9 ( <a href="#">NEK9 Products</a> )
Background:	Pleiotropic regulator of mitotic progression, participating in the control of spindle dynamics and chromosome separation. Phosphorylates different histones, myelin basic protein, beta-casein, and BICD2. Phosphorylates histone H3 on serine and threonine residues and beta-casein on

## Target Details

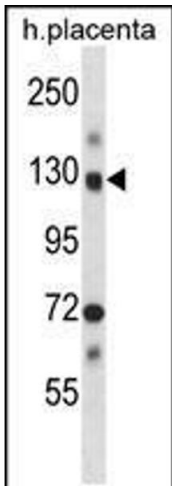
	serine residues Important for G1/S transition and S phase progression (By similarity).
Molecular Weight:	107 kDa
Gene ID:	217718
UniProt:	<a href="#">Q8K1R7</a>
Pathways:	<a href="#">SARS-CoV-2 Protein Interactome</a> , <a href="#">The Global Phosphorylation Landscape of SARS-CoV-2 Infection</a>

## Application Details

Application Notes:	For WB starting dilution is: 1:1000
Restrictions:	For Research Use only

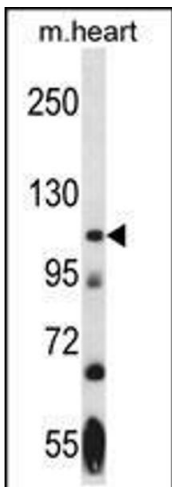
## Handling

Format:	Liquid
Concentration:	0.5 mg/mL
Buffer:	Supplied in PBS with 0.09 % (W/V) sodium azide.
Preservative:	Sodium azide
Precaution of Use:	This product contains Sodium azide: a POISONOUS AND HAZARDOUS SUBSTANCE which should be handled by trained staff only.
Storage:	4 °C, -20 °C
Storage Comment:	Store at 4°C for three months and -20°C, stable for up to one year. As with all antibodies care should be taken to avoid repeated freeze thaw cycles. Antibodies should not be exposed to prolonged high temperatures.



Western Blotting

**Image 1.** Western blot analysis in human placenta tissue lysates (35ug/lane).



Western Blotting

**Image 2.** Western blot analysis in mouse heart tissue lysates (35ug/lane).