

Datasheet for ABIN5537251  
**anti-OXSR1 antibody (N-Term)**

## 3 Images

[Go to Product page](#)

## Overview

Quantity:	400 µL
Target:	OXSR1
Binding Specificity:	AA 94-121, N-Term
Reactivity:	Human, Mouse
Host:	Rabbit
Clonality:	Polyclonal
Conjugate:	This OXSR1 antibody is un-conjugated
Application:	Western Blotting (WB), Immunohistochemistry (Paraffin-embedded Sections) (IHC (p))

## Product Details

Immunogen:	This Mouse Oxsr1 antibody is generated from rabbits immunized with a KLH conjugated synthetic peptide between 94-121 amino acids from the N-terminal region of mouse Oxsr1.
Isotype:	Ig Fraction
Purification:	This antibody is purified through a protein A column, followed by peptide affinity purification.

## Target Details

Target:	OXSR1
Alternative Name:	Oxsr1 ( <a href="#">OXSR1 Products</a> )
Background:	Oxsr1 regulates downstream kinases in response to environmental stress. May also have a function in regulating the actin cytoskeleton.

Target Details

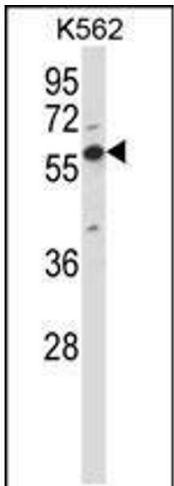
Molecular Weight:	58 kDa
Gene ID:	108737
UniProt:	<a href="#">Q6P9R2</a>
Pathways:	<a href="#">Tube Formation</a>

Application Details

Application Notes:	For WB starting dilution is: 1:1000
	For IHC-P starting dilution is: 1:10~50
Restrictions:	For Research Use only

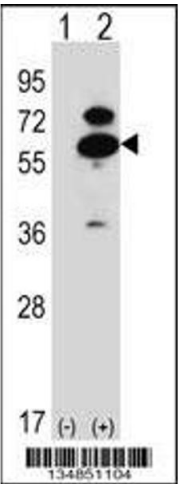
Handling

Format:	Liquid
Concentration:	0.5 mg/mL
Buffer:	Supplied in PBS with 0.09 % (W/V) sodium azide.
Preservative:	Sodium azide
Precaution of Use:	This product contains Sodium azide: a POISONOUS AND HAZARDOUS SUBSTANCE which should be handled by trained staff only.
Storage:	4 °C, -20 °C
Storage Comment:	Store at 4°C for three months and -20°C, stable for up to one year. As with all antibodies care should be taken to avoid repeated freeze thaw cycles. Antibodies should not be exposed to prolonged high temperatures.



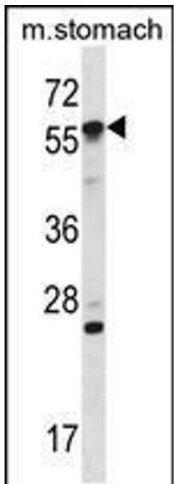
Western Blotting

**Image 1.** Western blot analysis in K562 cell line lysates (35ug/lane).



Western Blotting

**Image 2.** Western blot analysis of Oxsr1 using rabbit polyclonal Mouse Oxsr1 Antibody using 293 cell lysates (2 ug/lane) either nontransfected (Lane 1) or transiently transfected (Lane 2) with the Oxsr1 gene.



Western Blotting

**Image 3.** Western blot analysis in mouse stomach tissue lysates (35ug/lane).