

Datasheet for ABIN5537259
anti-P2RY2 antibody (C-Term)



[Go to Product page](#)

1 Image

Overview

Quantity:	400 µL
Target:	P2RY2
Binding Specificity:	AA 324-352, C-Term
Reactivity:	Human
Host:	Rabbit
Clonality:	Polyclonal
Conjugate:	This P2RY2 antibody is un-conjugated
Application:	Western Blotting (WB)

Product Details

Immunogen:	This P2RY2 antibody is generated from rabbits immunized with a KLH conjugated synthetic peptide between 324-352 amino acids from the C-terminal region of human P2RY2.
Isotype:	Ig Fraction
Purification:	This antibody is purified through a protein A column, followed by peptide affinity purification.

Target Details

Target:	P2RY2
Alternative Name:	P2RY2 (P2RY2 Products)
Background:	The product of this gene belongs to the family of G-protein coupled receptors. This family has several receptor subtypes with different pharmacological selectivity, which overlaps in some cases, for various adenosine and uridine nucleotides. This receptor is responsive to both

Target Details

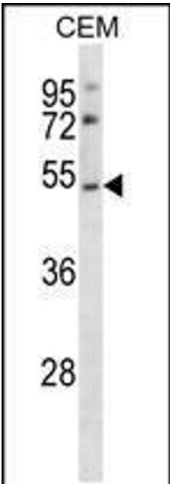
	adenosine and uridine nucleotides. It may participate in control of the cell cycle of endometrial carcinoma cells. Three transcript variants encoding the same protein have been identified for this gene.
Molecular Weight:	42 kDa
Gene ID:	5029
UniProt:	P41231
Pathways:	Cellular Response to Molecule of Bacterial Origin, Smooth Muscle Cell Migration

Application Details

Application Notes:	For WB starting dilution is: 1:1000
Restrictions:	For Research Use only

Handling

Format:	Liquid
Concentration:	0.3 mg/mL
Buffer:	Supplied in PBS with 0.09 % (W/V) sodium azide.
Preservative:	Sodium azide
Precaution of Use:	This product contains Sodium azide: a POISONOUS AND HAZARDOUS SUBSTANCE which should be handled by trained staff only.
Storage:	4 °C,-20 °C
Storage Comment:	Store at 4°C for three months and -20°C, stable for up to one year. As with all antibodies care should be taken to avoid repeated freeze thaw cycles. Antibodies should not be exposed to prolonged high temperatures.



Western Blotting

Image 1. Western blot analysis in CEM cell line lysates (35ug/lane).